



# DALI Lighting Control System





# CONTENTS

## About Theorylight

• DALI-2 System	6
• DALI-2 System Application Solution	7
• KNX DALI Gateway	8
• Wireless to DALI Application Solution	9
• DALI Center Overview	10
• intuitive Operation Interface DALI	10
• application	11
• LED Controller	12
• DT6 DALI LED Controller	12
• DT8 DALI LED Controller	13
• Multi-functional 6 in 1 PRO 4 Channels LED Controller	13
• LED Controller	13
• Multi-addresses PRO DALI DT8 LED Controller	14
• LED Controller 4 in 1 LED Controller	15
• DALI Dimmer with Built-in Master Function	15
• DALI+Push+Phase Cut+0/1-10V LED Dimmer	15
• 1% High Current Accuracy DALI NFC Smart Driver	16
• Our Advantages	17
• NFC DT6 Constant Current Single Color Dimmable Driver	18
• NFC DT6 Constant Current Single Color Dimmable DriverTrack Lights/Spot Lights, Built-in Application	19
• NFC DT6 Constant Current Single Color Dimmable Driver	20
• NFC DT6 Constant Current Single Color Dimmable Driver	21
• NFC D4i Constant Current Single Color Dimmable Driver	22
• NFC D4i Constant Current Single Color Dimmable Driver	23
• NFC DT8 Constant Current Tunable White Dimmable Driver	24
• NFC DT8 Constant Current Tunable White Dimmable Driver	25
• Track Lights/Spot Lights, Built-in Application	25
• NFC DT8 Constant Current Tunable White Dimmable Driver	26
• NFC DT8 Constant Current Tunable White Dimmable Driver	27
• NFC D4i Constant Current Tunable White Dimmable Driver	28
• NFC D4i Constant Current Tunable White Dimmable Driver	29
• Magnetic Track LED Dimmable Driver	30
• 4 in 1 Constant Current Dimmable Driver	31
• 4 in 1 Constant Voltage Dimmable Driver	31
• Constant Voltage DT6 Dimmable Driver	32
• Constant Voltage DT8 Dimmable Driver	33
• DALI Phase Dimmer	34
• AC Phase Dimmer	35
• DALI Relay	36
• DALI-2 Relay Module	36
• DIN Rail 4 Channel's DALI-2 Relay	37
• DALI Relay Module 4x16A	37
• Rotary Knob DALI MCU,DALI Rotary Knob	38
• Push Button-DALI Push Button	39
• DALI Panel	40
• Push Button Coupler	40
• DALI Module with Momentary Switch	41

• NFC Programmable 2-Key Push to DALI Control Unit	41
• DALI Touch Panel	42
• DALI-2 Push Button	43
• DALI-2 Touch Panel	43
• DALI-2 Panel	44
• DALI Professional Master Panel	44
• DALI-2 Rotary Dimmer	45
• DALI Scene Controller	45
• DALI-2 Push-Button Coupler	46
• DALI-2 Motion Sensor Coupler	46
• DALI-2 Push Button Coupler with NFC	47
• DALI-2 & D4i Sensor	48
• Ceiling Mounted DALI-2 PIR	49
• + Photocell Sensor	49
• Fixture Integrated DALI-2 PIR + Photocell Sensor	49
• Fixture Integrated Zhaga 20 DALI-2 PIR + Photocell Sensor	49
• DALI-2 Master	50
• Touch Panel DALI-2 Master	50
• USB Interface DALI-2 Master	50
• Gateway	51
• DALI IoT Gateway	51
• KNX to 2 Channel DALI Gateway	51
• DALI Bus PS	52
• DALI Bus Power Supply	52
• Repeater	53
• DIN Rail DALI Repeater PS	53
• DALI Repeater PS	53
• Broadcast Module	54
• DALI Broadcast Module	54
• Wireless to DALI Converter	55
• Wireless to DALI+0/1-10V 2 in 1 Converter	55
• Wireless to DALI Converter	56
• Wireless+Push to DALI+0/1-10V Converter	56
• Wireless to DALI Converter	56
• DALI to 0/1-10V Converter	57
• DALI to 0/1-10V/PWM Dimmer	57

## About TheoryLight

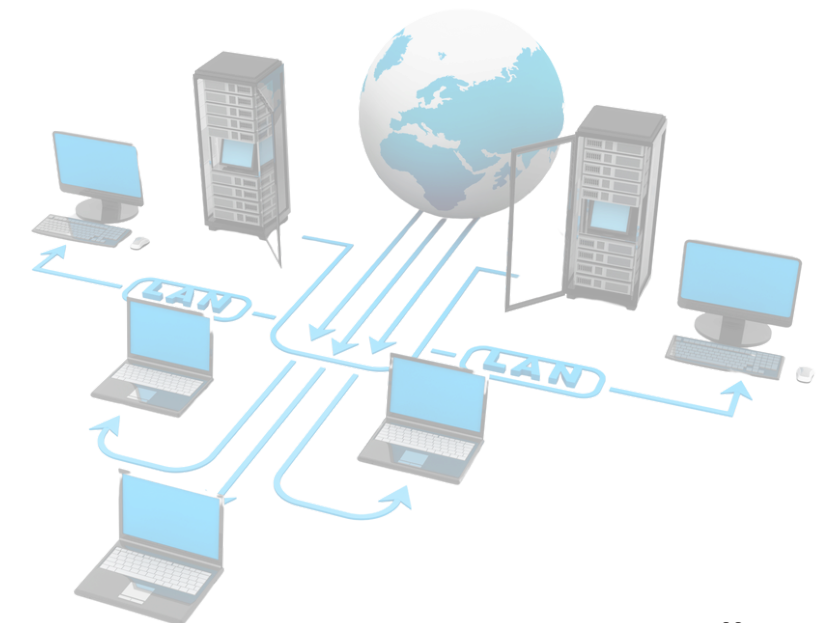


Theory Light has been specializing in wired and wireless lighting control systems for over twelve years. Our products, distinguished by their innovative design and superior quality, are extensively employed in commercial lighting, industrial lighting, and smart home applications.

Theory Light is a preferred partner for many leading global brands. Leveraging extensive experience and expertise in lighting control systems and IoT technologies—including DALI, DMX 512, KNX, ZigBee, Wi-Fi.

We have designed and manufactured various high quality product types for our global clients. We always take good care of our clients with:

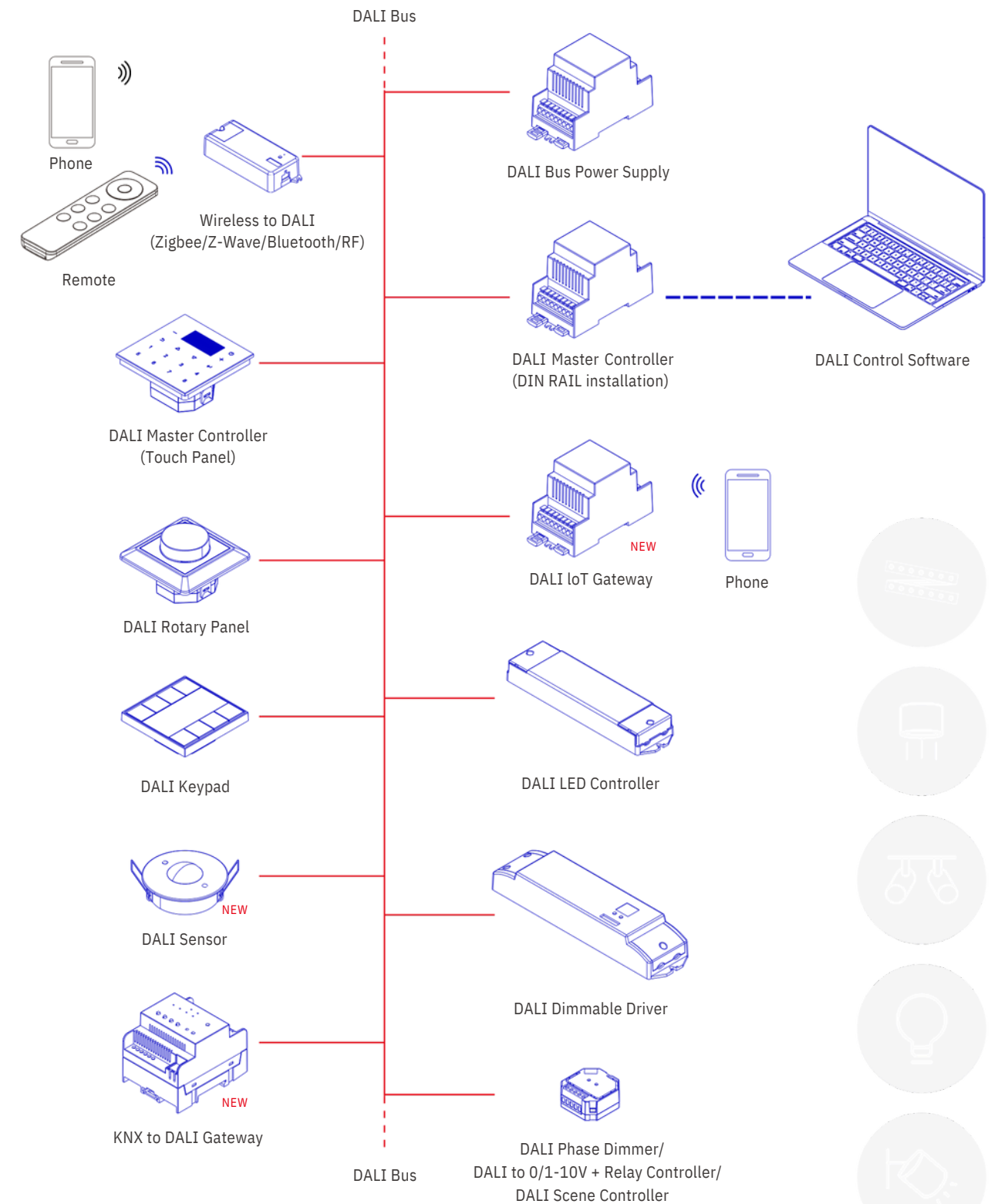
- Highly experienced and proficient R&D team
- Efficient production processes with rigorous quality control
- Exceptional after-sales support
- Patented designs and functionalities
- Certifications for DALI-2, KNX, ZigBee







# DALI Control System



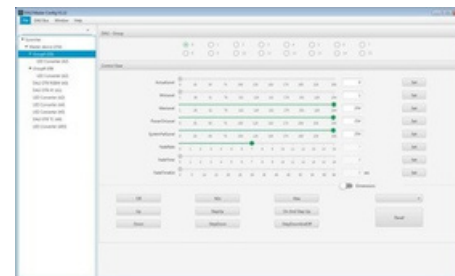


The DALI-2 system is an advanced intelligent control solution based on the standard DALI-2 protocol, integrating Internet connectivity, cloud computing, and on-site project management. This system supports both standard and wireless DALI-2 protocols and devices, facilitating multi- device connections, complex device linkages, and logic configurations. It also enables control of lighting and curtains, supports preset and remote commissioning, and is suitable for both small and large-scale applications.

An advanced lighting control system with fully DALI-2 compliant and certified.

#### Features:

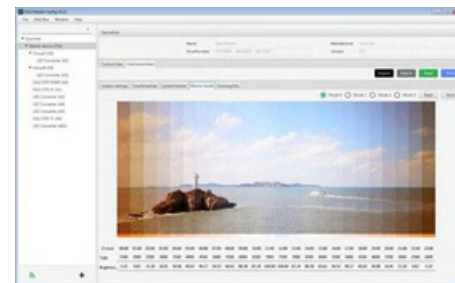
Comprehensive support for DALI and DALI-2 protocols and devices  
User-friendly preset and commissioning functionalities  
Project management through site creation  
Error reporting capability  
Integrated configuration  
Local and offline operation capabilities after initial setup  
Seamless integration with building control systems  
Versatile control suitable for rooms, floors, and entire buildings



Chinese and English Setting Interface

#### Functions:

- Adjust brightness, color temperature, and RGB settings
- Manage address assignments, groupings, and scenes
- Control motion sensors
- Implement illumination compensation
- Operate curtains
- Configure biorhythms for human-centric lighting
- Set up cycle plans
- Manage complex logic and device associations

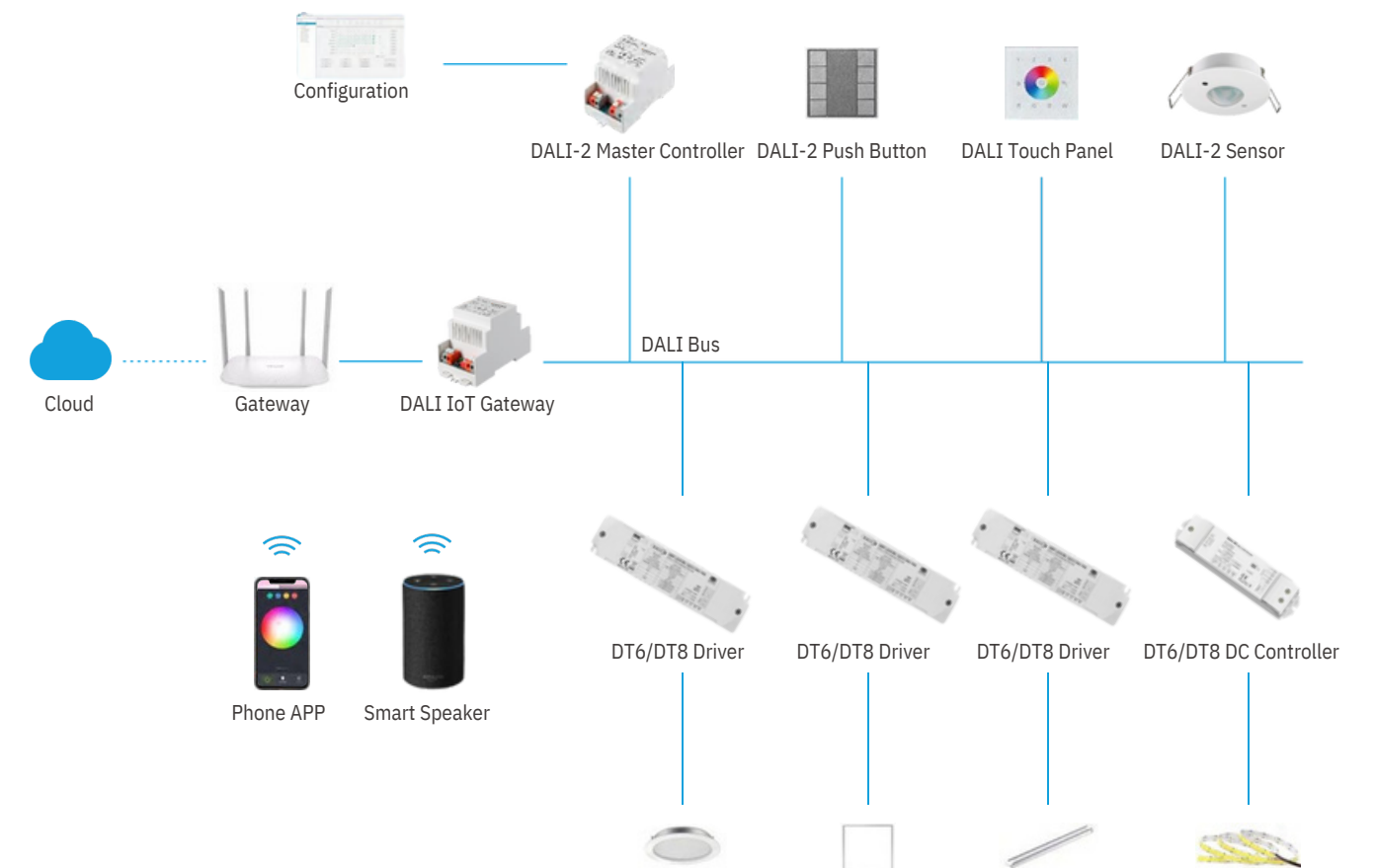


Human Centric Lighting

## DALI-2 System Application Solution

### Solution for Small Space

For small space lighting control, where the number of lamps typically does not exceed 64, a single DALI loop is sufficient, as each loop supports up to 64 DALI devices. The Theorylight DALI-2 master controller (TL-2300-USB) facilitates the installation of standard DALI-2 control devices and drivers, including control panels and sensors. By flexibly configuring panels, sensors, drivers, and software, effective lighting control for small spaces can be achieved.

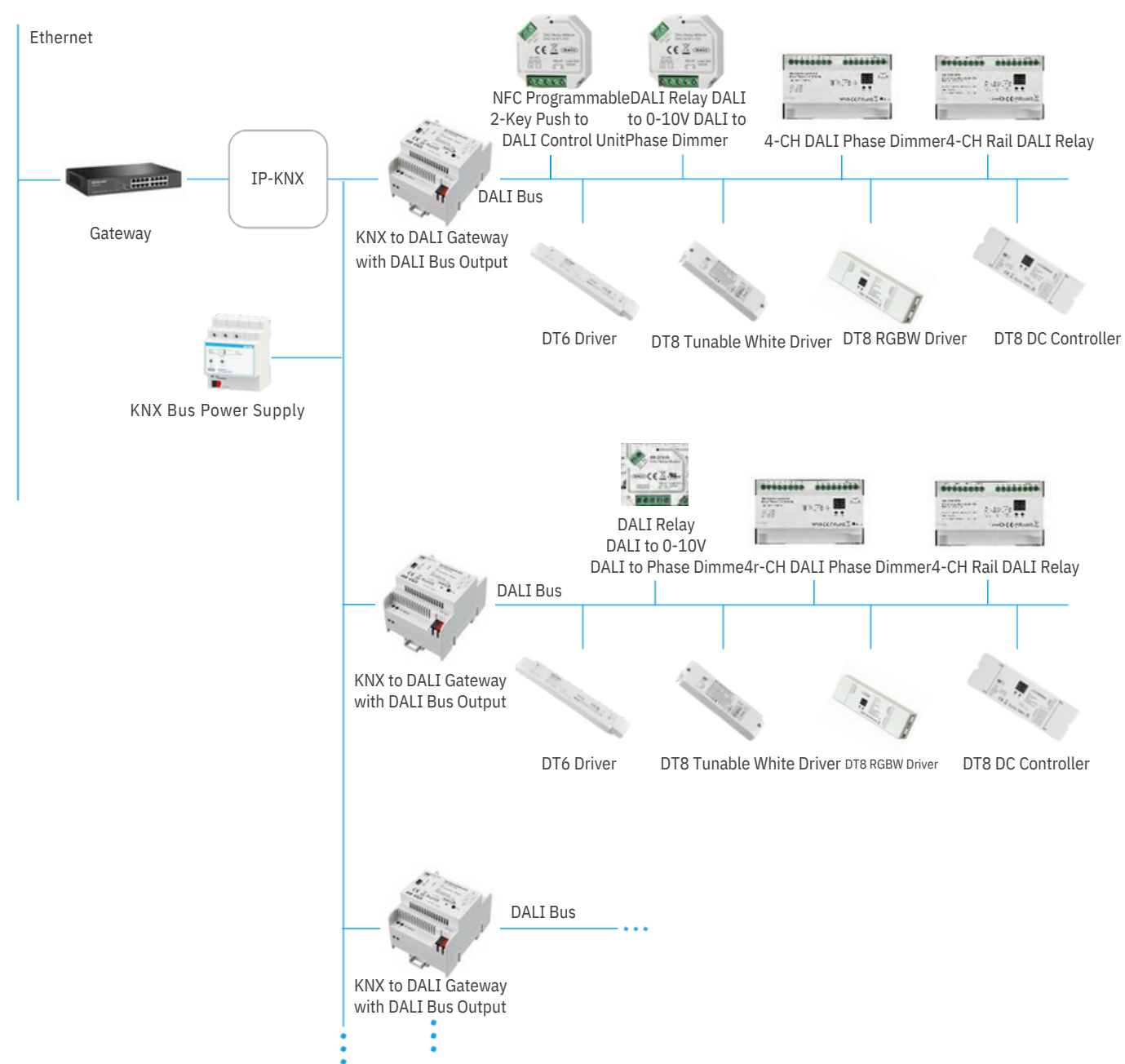


## DALI-2 System Application Solution

### KNX DALI Gateway

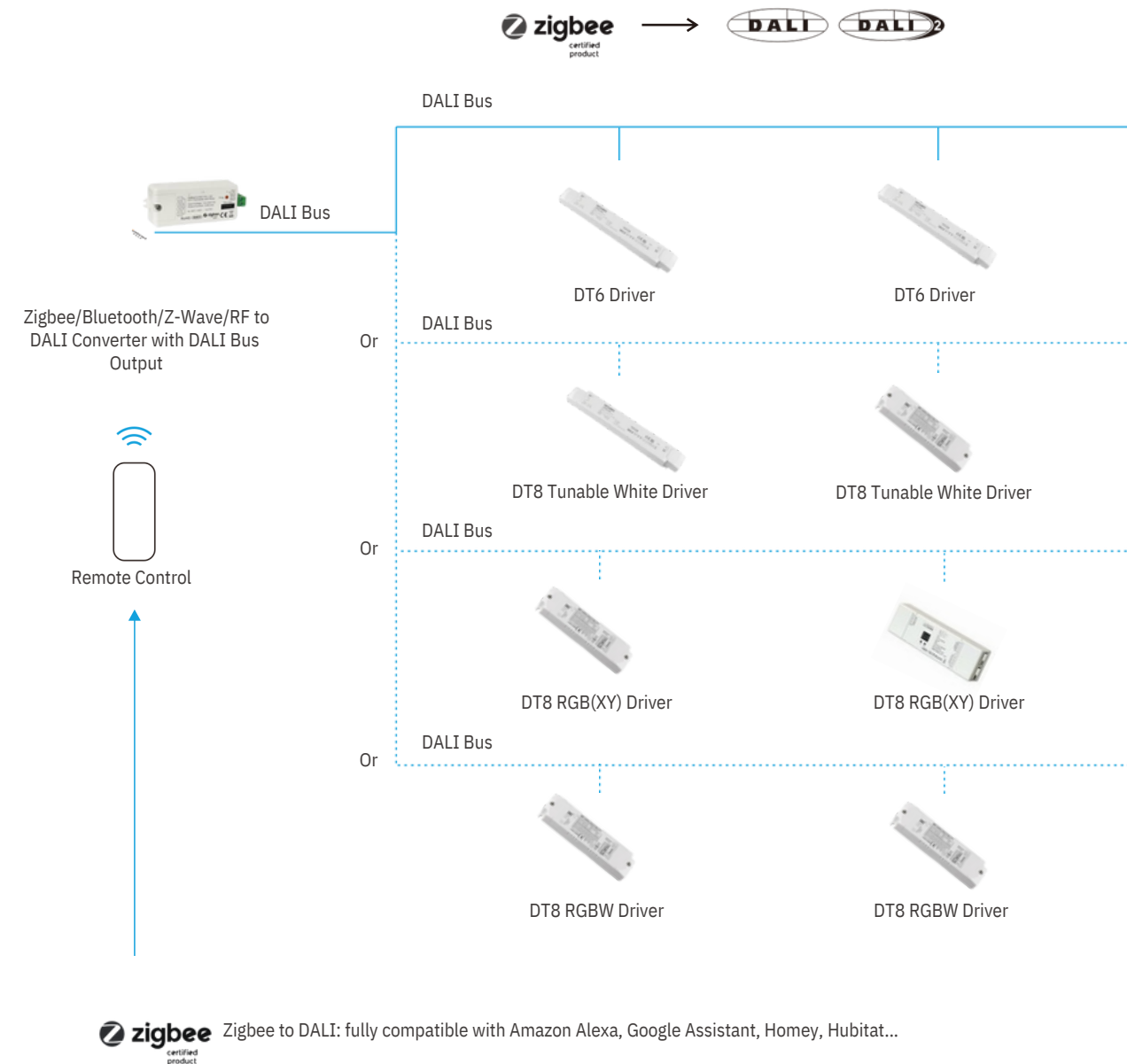
The KNX DALI Gateway is a DIN rail-mounted module designed for installation on a 35 mm mounting rail within a distribution board. It functions as a single-master controller compliant with DALI standard IEC 62386 Parts 101 ed2 and 103 ed1. Compatible with both DALI and DALI-2 systems, the gateway supports Device Type 6, Device Type 8 Tc, Device Type 8 XY coordinate, and Device Type 8 RGB. It interfaces with DALI systems according to IEC 62386 standards.

their integration in a KNX building installation. The DALI gateway has 2 channels DALI output. Up to 64 DALI devices can be connected to each DALI output. DT6 and DT8 devices can all be connected to each DALI output in a mixed configuration.



## Wireless to DALI Application Solution

To streamline system transformation and upgrades, Theory Light offers a range of wireless-to-DALI solutions, including Zigbee, Bluetooth, Z-Wave, and RF-to-DALI conversions.



## DALI Center Overview

DALI Center is a local computer-based platform developed by Theory Light for managing lighting in public buildings. Featuring a user-friendly interface, it offers straightforward installation and deployment. The platform supports both individual and centralized control of lighting across various areas and includes an energy analysis interface. Additionally, DALI Center enhances energy efficiency through scheduling and sensor automation features.

## Core Advantages



**Ease of Use**  
The DALI Center boasts an intuitive and user-friendly interface, ensuring that setup and control processes are both straightforward and efficient.



**Energy Management**  
DALI Center provides robust energy analysis and statistical tools to assist users in reducing energy consumption and enhancing overall energy efficiency.



**Scheduling and Automation**  
The platform supports scheduled tasks and automation configurations, enhancing lighting control with increased intelligence and automation.



**Multi-Device Type Support**  
DALI Center is compatible with a diverse array of DALI and 0-10V devices, as well as wireless conversion devices, offering a broad range of options for device integration.



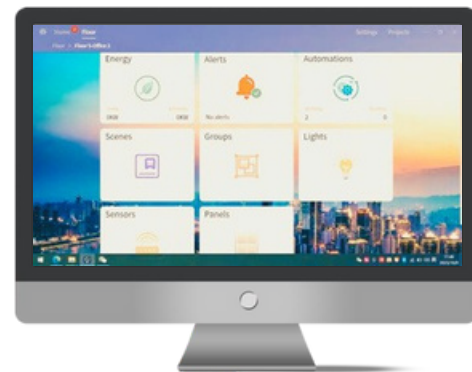
**Stability**  
The local deployment of DALI Center ensures high stability and reliability, making it well-suited for commercial and public building applications.



**Versatility**  
DALI Center functions as an all-in-one solution, addressing both lighting control and energy management needs, and is adaptable to a wide range of application scenarios.

## Intuitive Operation Interface

DALI Center features an area overview window that acts as a central hub for managing all configurations, including automation, groups, scenes, and more. This window offers a clear visualization of device types within specific areas. The energy statistics module provides graphical representations of energy consumption, while the alarm module ensures timely updates on device statuses.



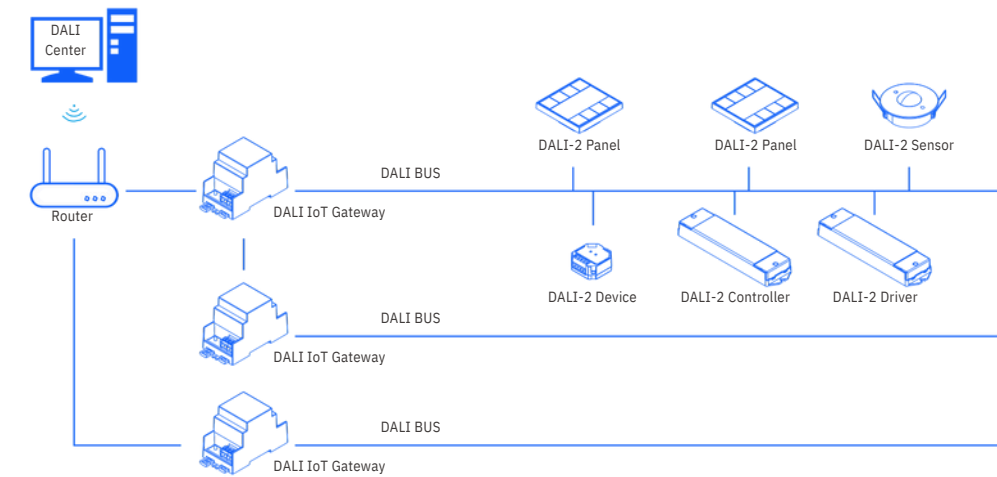
## Quick Creation and Setting

DALI Center provides two methods for project creation: importing existing projects and creating new ones from scratch. During the setup process, you can configure areas according to your specific needs, with each area capable of supporting multiple gateways. The settings window allows for convenient access and adjustment of all configurations related to devices, groups, scenes, gateways, and the overall system.

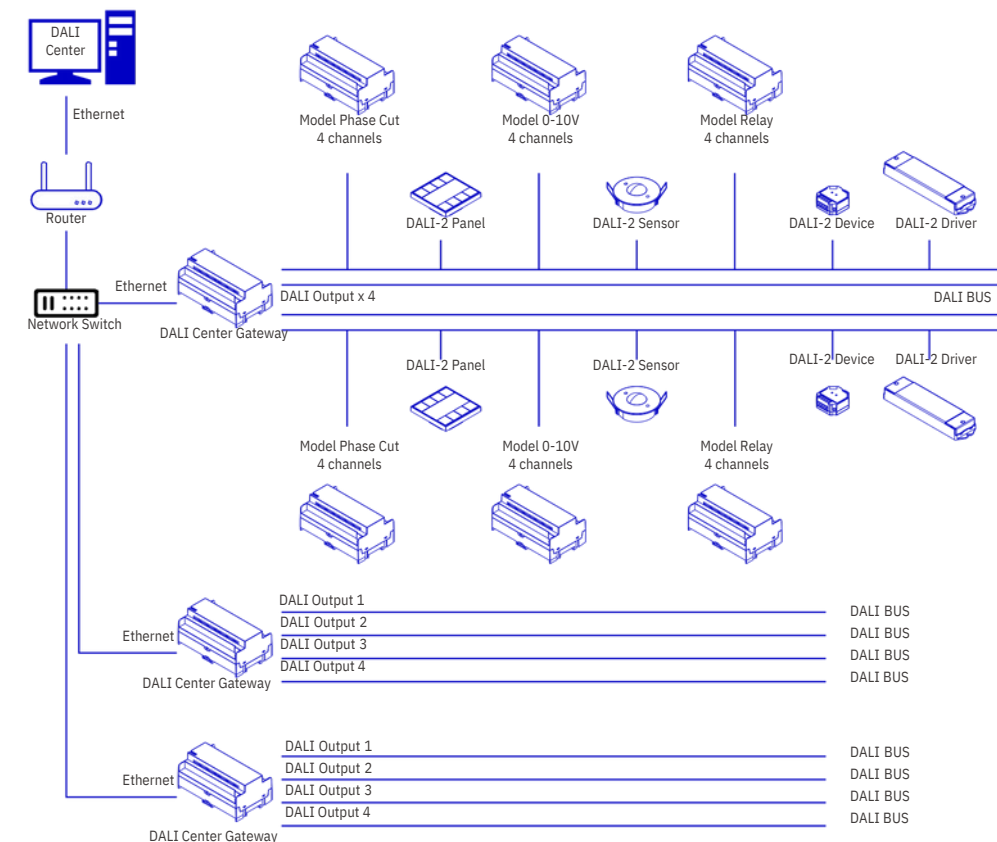
## Application

**Small Space:** Utilize a conventional DALI IoT gateway for straightforward lighting control in smaller areas.

**Large and Complex Spaces:** Employ cascading and linkage through the DALI-2 gateway to manage lighting and curtain systems in extensive and intricate environments. Each DALI-2 gateway features an Ethernet port, enabling cascading and device linkage via configuration software. For instance, the control panel of one gateway (A) can operate lights managed by another gateway (B). Additionally, lights under gateways A and B can be grouped together for unified control. This setup allows for independent operation or integration with an encrypted cloud for configuration, control, and upgrades.




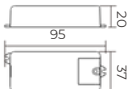
## Medium to large spaces: professional DALI+0-10V+relay IOT gateway


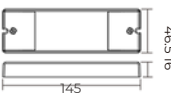



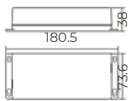



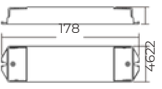
## DT6 DALI LED Controller


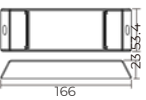
- Interface: Integrated DALI-2 interface, compatible with DALI DT6 devices.
- Address Setting: Supports both manual and automatic DALI address setting for flexible configuration.
- Standards Compliance: Compliant with IEC 62386-101:2014, IEC 62386-102:2014, and IEC 62386-207 Ed2 standards.


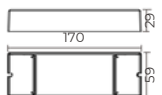
 	
Model	TL- 2303SIOT
Input Voltage	12- 36Vdc
Output Current	8A*1CH
Output Power	96-288W
Feature	Push dim


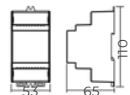
 	
Model	TL- 2303IOT(Push Dim)
Input Voltage	12-24Vdc
Output Current	10A*1CH
Output Power	120- 240W
Feature	Super slim, Push dim

 	
Model	TL-2302BIOT(WP)
Input Voltage	12-36Vdc
Output Current	5A*4CH 240-720W
Output Power	240- 720W
Feature	IP67, 1 address

 	
Model	TL-2302BIOT
Input Voltage	12-36Vdc
Output Current	5A*4CH 240-720W
Output Power	240- 720W
Feature	1 address

 	
Model	TL-2304BIOT
Input Voltage	12-36Vdc
Output Current	5A*4CH 240-720W
Output Power	240- 720W
Feature	Can set 1-4 address Push dim

 	
Model	TL-2302BEAIOT
Input Voltage	12-36Vdc
Output Current	8A*4CH 384-1152W
Output Power	1152W
Feature	8A/CH, 1 address


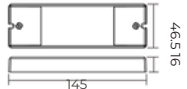
 	
Model	TL-2304BEAIOT
Input Voltage	12-36Vdc
Output Current	8A*4CH 384-1152W
Output Power	1152W
Feature	Can set 1-4 addresses, Push dim

## LED Controller

## DT8 DALI LED Controller


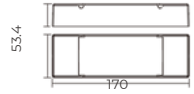
- Standards Compliance: Compliant with IEC 62386-101:2014, IEC 62386-102:2014, IEC 62386-207 Ed2, and IEC 62386-209:2011.
- Interface: Integrated DALI-2 interface, compatible with DALI DT8 devices.
- Command Support: Supports DT8 device commands, ensuring compatibility with DALI masters that utilize DT8 commands.
- Manual Address Setting: Features a numeric digital display for easy manual setting of the DALI address.

### Constant Voltage


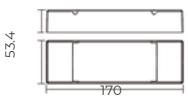
 	
Model	TL-2309SIOT-CCT
Input Voltage	12-24Vdc
Output Current	5A*2CH
Output Power	120-240W
Feature	Color Type Tc, Super slim, Push dim

## Multi-functional 6 in 1 PRO 4 Channels LED Controller

- Interface: Integrated DALI-2 interface, compatible with DALI DT8 devices.
- Addressing Capability: Supports multi-address functionality for DT8 control gear.
- Output Channels: Features 4 channels of PWM output for versatile control.
- Device Integration: Allows multiple devices to be integrated within a single control gear.
- Multi-Functional Design: Offers 6-in-1 capabilities, including Tc, RGBWAF, XY, 2\*Tc, XY+W (DT6), and DT6 functionalities.
- Device Configuration: Different device types can be configured via buttons and a display for user-friendly operation.

 	
Model	TL-2309PROIOT
Input Voltage	12-36Vdc
Output Current	5A*4CH
Output Power	240- 720W
Feature	6 in 1: Tc, RGBWAF, XY, 2*Tc, XY+W (DT6), DT6



### Constant Current

 	
Model	TL-2309PROIOT-3
Input Voltage	12-48Vdc
Output Current	350mA*4CH
Output Power	16.8-67.2W
Feature	6 in 1: Tc, RGBWAF, XY, 2*Tc, XY+W (DT6), DT6

Multi-addresses PRO DALI DT8


LED Controller

- Interface: Integrated DALI-2 interface, compatible with DALI DT8 devices.
- Addressing Capability: Supports multi-address functionality for DT8 control gear.
- Device Integration: Allows multiple devices to be integrated within a single control gear.
- Multi-Functional Design: Offers 8-in-1 capabilities, including Tc, RGBWAF, XY, 2\*Tc, XY+Tc, RGB+Tc, XY+W (DT6), and DT6 functionalities.
- Device Configuration: Can be configured as various device types, including both single-address and multi-address types.



Model	TL-2309PROIOT- 5C
Input Voltage	12-36Vdc
Output Current	5A*5CH
Output Power	300- 900W
Feature	Push dim





Free combination of any 2 color types through dual-address function to achieve separate control



Support Push Dim

DT8



All DT8 color types included, 100% compatibility with all DALI systems in the market



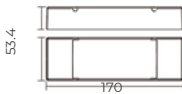

With digital display for manual setting different modes & DALI addresses

LED Controller

4 in 1 LED Controller

DALI Dimmer with Built-in Master Function

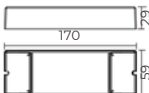

- Interface: Integrated DALI-2 interface, compliant with DALI DT6 devices.
- Output Capability: Features 4 channels of PWM output with a built-in DALI master function, eliminating the need for an external DALI master.
- Display Interface: Equipped with an OLED display for easy and fast installation.
- Scene Management: Supports predefining and recalling up to 16 DALI scenes for each of the 4 PWM outputs individually.
- Dimming Curve Options: Allows for setting either logarithmic or linear dimming curves to match human eye sensitivity.
- PWM Frequency: Adjustable PWM frequency ranging from 250Hz to 30KHz, ensuring flicker-free operation with no audible noise.
- Minimum Dimming Level: Enables setting a minimum dimming level, with adjustments possible between this level and maximum output.
- Manual Control: Allows for manual adjustment of output levels for each of the 4 PWM outputs individually.
- Fade Settings: Offers configuration options for fade time, fade rate, power-on level, and system failure level for enhanced control.



Model	TL-2303FAIOT- OLED	TL-2309IOTFA-OLED
Input Voltage	12-36Vdc	12-36Vdc
Output Current	5A*4CH	5A*4CH
Output Power	240-720W	240-720W
Feature	DT6, 1-4 addresses, Enables to address & group 4 PWM outputs individually	DT8 colour types all in one: XY, Tc, RGBWA, XY+Tc and RGB+Tc settable

DALI+Push+Phase Cut+0/1-10V LED Dimmer

- Multifunctionality: Offers 4-in-1 functionality with DALI, AC push, 0/1-10V, and Phase Cut dimming interfaces.
- Interface: Integrated DALI-2 interface, compliant with DALI DT6 devices.
- Compatibility: Compatible with all DALI systems available in the market.
- Dimming Interface Selection: Features a dip switch for selecting different dimming interfaces.
- Dimming Input Support: Supports both leading edge and trailing edge dimming inputs.
- Address Assignment: One DALI address is assigned by the DALI master for easy integration.

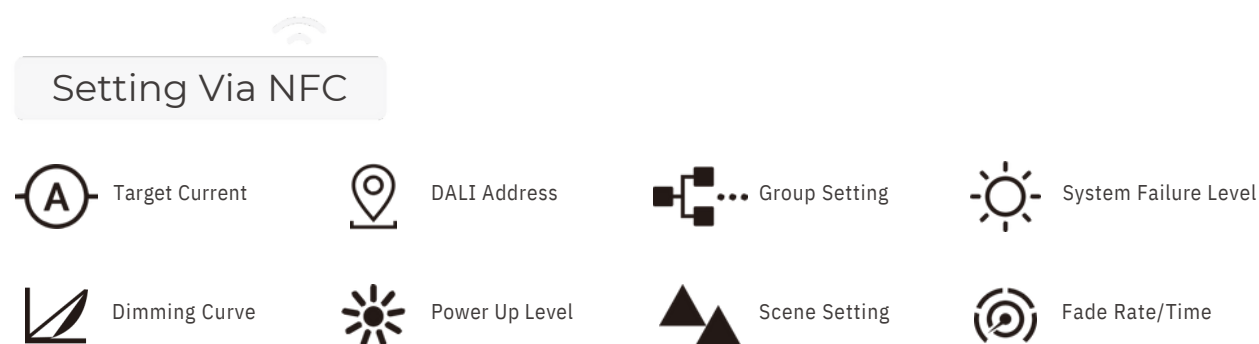
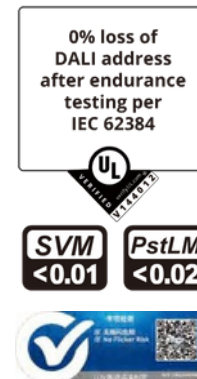


Model Input	TL-2303PIOT(4 IN 1)
Voltage Output	12-48Vdc
Current Output	20A*1CH
Power	240- 960W



# 1% High Current Accuracy DALI NFC Smart Driver

- Constant Lumen Output
- Corridor Mode
- 0.1% Depth & Smoothness Dimming
- Absolutely No-Flicker
- Emergency Mode
- 0.1mA Per Gear Of Current Selecting



## Our Advantages

THEORY LIGHT is a Regular Member of the DALI Alliance, a member of DALI-CFG, and the first DALI training base. We provide a comprehensive range of DALI solutions, including master controllers, drivers, controllers, relays, panels, gateways, sensors, signal amplifiers, and various interface solutions such as wireless-to-DALI (WiFi, Zigbee, Bluetooth) and DALI-to-wired (0/1-10V, Triac, relay, scene). Our extensive product and software offerings are designed to meet a wide array of customized needs.



### Super Compatibility

THEORY LIGHT DALI products are compatible with major brands. DALI masters will never lose addresses.



### Digital Tube Display

The DALI address display feature, protected by a national patent, allows for the configuration of DALI addresses and address quantities. This functionality simplifies the commissioning and maintenance processes.



### Wireless to DALI

Wireless-to-DALI converter makes system upgrades easier.



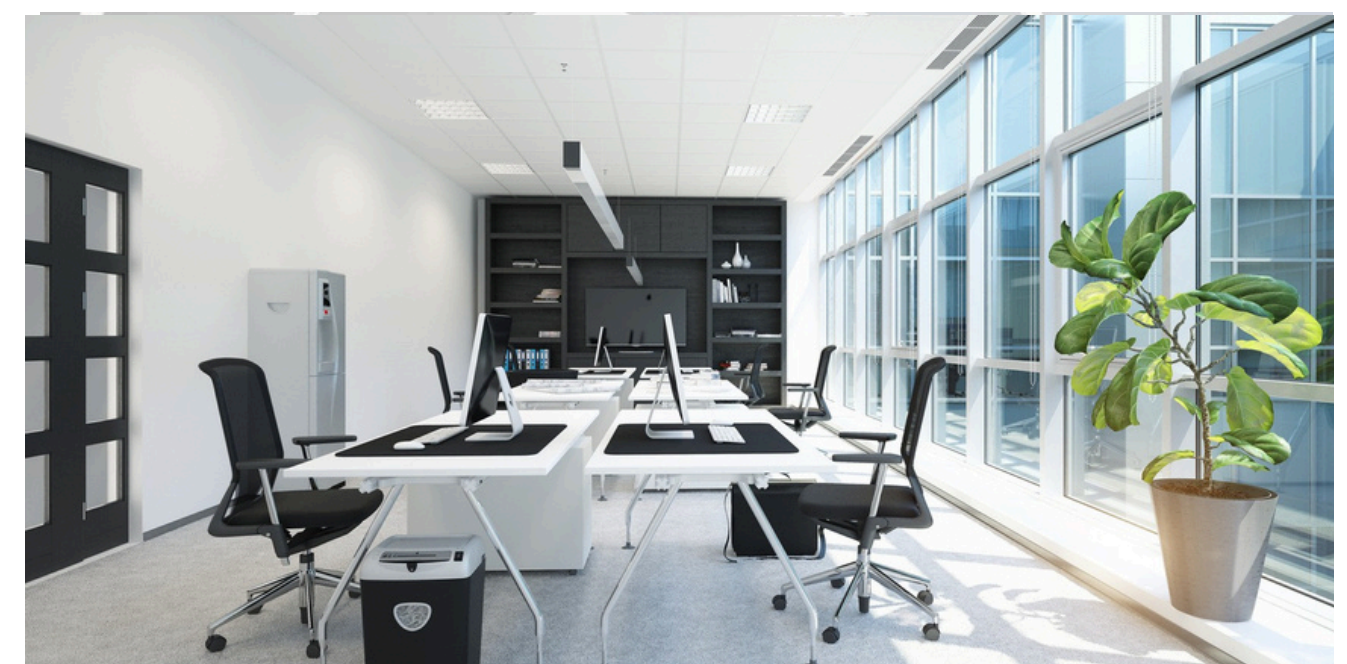
### Plentiful DALI-2 Certified Devices

The latest DALI-2 standards are designed to accommodate customized customer requirements. Nearly 100 products have achieved DALI-2 certification, and Theory Light is a Regular Member of the DALI Alliance.



### Control Multiple Color Types

A 5-channel output device can manage multiple color types of DALI DT8 devices. It can independently control two Tunable White lights and simultaneously handle dimming functions along with RGB/RGBW control. This capability reduces the need for multiple SKUs.



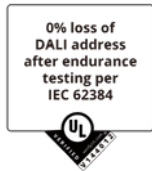


## NFC DT6 Constant Current Single Color Dimmable Driver

### Product Features

- Certification: DALI-2 certified, compliant with DALI DT6 standards.
  - Premium Performance: Delivers high power factor (PF), exceptional efficiency, and low total harmonic distortion (THD).
  - Adjustable Minimum Current: Configurable down to 0.1mA with precise step accuracy.
  - Special Operating Modes: Features Corridor Mode (CD), Constant Lumen Output (CLO), and Emergency Mode (EL) for versatile functionality.
- Push-Dim Functionality: Facilitates intuitive and user-friendly dimming control.
  - Precision Accuracy: Achieves  $\pm 1\%$  current accuracy, establishing a global benchmark for performance.
  - Flicker-Free Operation: Guarantees compatibility with camera shooting and recording, eliminating flicker issues.
  - High Dimming Resolution: Offers an impressive dimming depth of 1/1000 for enhanced precision.
  - Global Certifications: Compliant with leading international standards, including CCC, TUV ENEC, RCM, CE, and others.
  - Comprehensive NFC Settings: Provides ultra-flexible and customizable configurations via NFC technology.

TL-Data 251/252/253



### Standalone Application

Suitable for spotlights, downlights, panel lights, and other lights using external drivers.



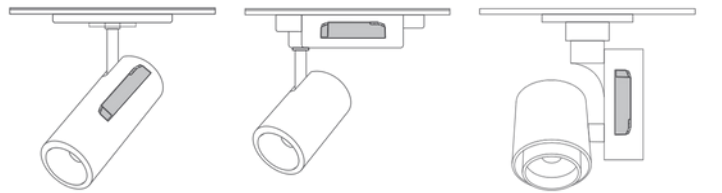
Product Model	Product Picture	Input Voltage VAC/VDC	Output Voltage VDC	Output Current mA	Channel CH	Output Power W	Power Factor	Efficiency	Dimension mm
TL-2305NIOT-10CC100-500	1	220-240	3-42	100-500	1	10	>0.94	80%	101*36*25
TL-2305NIOT-12CC100-700	2	220-240	6-42	100-700	1	12	>0.97	80%	135*35*20
TL-2305NIOT-15CC100-700	2	220-240	6-42	100-700	1	15	>0.97	82%	135*35*20
TL-2305NIOT-25CC250-700	3	220-240	6-54	250-700	1	25	>0.97	85%	120*41*28
TL-2305NIOT-36CC350-1050	4	220-240	6-54	350-1050	1	36	>0.95	86%	145*45*30
TL-2305NIOT-45CC500-1400	4	220-240	6-54	500-1400	1	45	>0.98	89%	145*45*30
TL-2305NIOT-65CC500-1500	5	220-240	6-54	500-1500	1	65	>0.98	90%	124*78.8*30

## NFC DT6 Constant Current Single Color Dimmable Driver

TL-Data 251/252/253

### Track Lights/Spot Lights, Built-in Application

Compatible with a wide range of lighting solutions, including high and low voltage rail lights, integrated downlights, integrated floodlights, garden lights, and other fixtures utilizing built-in drivers.

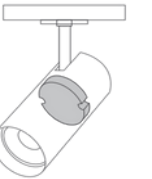


Product Model	Input Voltage VAC/VDC	Output Voltage VDC	Output Current mA	Channels CH	Output Power W	Power Factor	Efficiency	Dimension mm
TLPT-2305NIOT-28CC150-700	220-240	6-50	150-700	1	28	>0.95	86%	97*43*23.5
TLPT-2305NIOT-38CC300-1050	220-240	6-50	1050 600-1400	1	38	>0.96	87%	97*43*28
TLPT-2305NIOT-44CC600-1400	220-240	6-50		1	44	>0.96	87%	97*43*30

### Track Lights/Spot Lights, Built-in Application

TL-Data 251/252/253

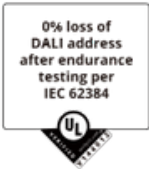
Appropriate for various high and low voltage rail lights, integrated downlights, and integrated floodlights, garden lights, and other lights using built-in drivers.



Product Model	Input Voltage VAC/VDC	Output Voltage VDC	Output Current mA	Channels CH	Output Power W	Power Factor	Efficiency	Dimension mm
TLPY-2305N-10CC100-500	220-240	10-42	100-500	1	10	>0.95	86%	φ57*24
TLPY-2305N-15CC200-700	220-240	10-42	200-700	1	15	>0.96	87%	φ57*24
TLPY-2305N-25CC300-850	220-240	10-42	300-850	1	25	>0.96	87%	φ65*30
TLPY-2305N-36CC600-1200	220-240	10-42	600-1200	1	36	>0.96	87%	φ72*30

NFC DT6 Constant Current Single Color Dimmable Driver

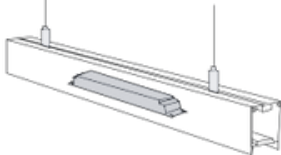
TL-Data 251/252/253



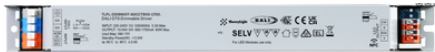
Product Features

- DALI-2 Certified with support for DALI DT6 protocol.
- Specifically engineered for premium-grade applications, offering high power factor (PF), exceptional efficiency, and low total harmonic distortion (THD).
- Adjustable minimum current down to 0.1mA with precise step accuracy.
- Supports CD (Corridor Mode) for dynamic lighting control.
- Integrated CLO (Constant Lumen Output) for maintaining consistent illumination over time.
- Features EL (Emergency Mode) functionality for safety-critical operations.
- Optimized for Linear Applications, making it ideal for strip lights, tri-proof lights, floor lights, bracket lights, and other ultra-thin lighting fixtures.

- **\*\*Push-Dim\*\*** functionality for easy dimming control
- $\pm 1\%$  current accuracy, setting a world-leading standard
- Flicker-free operation, ensuring compatibility with all camera shooting and recording
- Exceptional dimming depth, down to 1/1000
- Certified to global high-end standards (CCC, TUV ENEC, RCM, CE, etc.)
- Ultra-comprehensive NFC settings for flexible and versatile configuration



EU Standard



SELV

Product Model	Input Voltage VAC/VDC	Output Voltage VDC	Output Current mA	Channel CH	Output Power W	Power Factor	Efficiency	Dimension mm
TLPL-2305NIOT-30CC250-850	220-240	10-54	250-850	1	30	>0.95	85%	243*30*21
TLPL-2305NIOT-40CC500-1050	220-240	10-54	500-1050	1	40	>0.95	85%	243*30*21
TLPL-2305NIOT-50CC650-1300	220-240	10-54	650-1300	1	50	>0.95	87%	284*30*21
TLPL-2305NIOT-60CC900-1700	220-240	10-54	900-1700	1	60	>0.95	87%	284*30*21
TLPL-2305NIOT-80CC1000-2000	220-240	10-54	1000-2000	1	80	>0.95	89%	355*30*21

Non-SELV

Product Model	Input Voltage VAC/VDC	Output Voltage VDC	Output Current mA	Channel CH	Output Power W	Power Factor	Efficiency	Dimension mm
TLPL-2305NIOT-40CC80-400H	220-240	50-220	80-400	1	40	>0.95	90%	243*30*21
TLPL-2305NIOT-60CC120-550H	220-240	50-220	120-550	1	60	>0.97	92%	243*30*21
TLPL-2305NIOT-80CC100-450H	220-240	50-220	100-450	1	80	>0.97	92%	243*30*21
TLPL-2305NIOT-80CC350-700H	220-240	50-220	350-700	1	80	>0.97	92%	284*30*21
TLPL-2305NIOT-100CC250-1000H	220-240	50-220	250-1000	1	100	>0.98	94%	284*30*21
TLPL-2305NIOT-150CC200-1050H	220-240	100-300	200-1050	1	150	>0.98	90%	355*30*21

NFC DT6 Constant Current Single Color Dimmable Driver

TL-Data 251/252/253



US Standard



SELV

Product Model	Input Voltage VAC	Output Voltage VDC	Output Current mA	Channel CH	Output Power W	Power Factor	Efficiency	Dimension mm
TLPL-2305NIOT-30CC250-850U	120-277	10-54	250-850	1	30	>0.95	85%	243*30*21
TLPL-2305NIOT-40CC500-1050U	120-277	10-54	500-1050	1	40	>0.95	85%	243*30*21
TLPL-2305NIOT-50CC650-1300U	120-277	10-54	650-1300	1	50	>0.95	87%	284*30*21
TLPL-2305NIOT-60CC900-1700U	120-277	10-54	900-1700	1	60	>0.95	87%	284*30*21
TLPL-2305NIOT-80CC1000-2000U	120-277	10-54	1000-2000	1	80	>0.95	89%	355*30*21

NFC D4i Constant Current Single Color Dimmable Driver

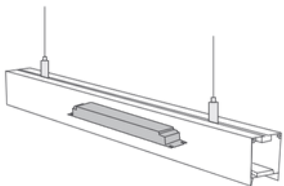
Product Features

- Certification: DALI D4i certified (in application).
- Compliance: DALI-2 certified with support for DALI DT6.
- Performance: Designed exclusively for premium products, featuring a high power factor (PF), exceptional efficiency, and low total harmonic distortion (THD).
- Current Adjustment: Minimum current settings can be configured down to 0.1mA with precise step accuracy.
- Functionality: Supports Corridor Mode (CD) for tailored lighting solutions.
- Constant Lumen Output: Enables Constant Lumen Output (CLO) for consistent light levels over time.
- Emergency Feature: Includes Emergency Mode (EL) for enhanced safety and reliability.

Linear Application

Suitable for strip lights, tri-proof lights, floor lights, bracket lights, and other linear or ultra-thin lights.

- Dimming Control: Features Push-Dim functionality for intuitive dimming adjustments.
- Accuracy: Achieves ±1% current accuracy, recognized as world-leading.
- Flicker-Free Operation: Ensures flicker-free performance, making it suitable for camera shooting and recording without concerns.
- Dimming Depth: Offers an exceptional dimming depth of 1/1000 for precise control over light levels.
- Certifications: Compliant with global high-end certifications, including CCC, TUV ENEC, RCM, and CE.
- NFC Configuration: Provides ultra-full NFC settings, allowing for flexible and customizable configurations.
- Built-in Power Supply: Includes a built-in DALI-250 bus power supply, facilitating easy connection to DALI-2 sensors.



EU Standard



SELV

Product Model	Input Voltage VAC/VDC	Output Voltage VDC	Output Current mA	Channel CH	Output Power W	Power Factor	Efficiency	Dimension mm
TLPL-2305INIOT-30CC250-850	220-240	10-54	250-850	1	30	>0.95	85%	243*30*21
TLPL-2305INIOT-40CC500-1050	220-240	10-54	500-1050	1	40	>0.95	85%	243*30*21
TLPL-2305INIOT-50CC650-1300	220-240	10-54	650-1300	1	50	>0.95	87%	284*30*21
TLPL-2305INIOT-60CC900-1700	220-240	10-54	900-1700	1	60	>0.95	87%	284*30*21
TLPL-2305INIOT-80CC1000-2000	220-240	10-54	1000-2000	1	80	>0.95	89%	355*30*21

Non-SELV

Product Model	Input Voltage VAC/VDC	Output Voltage VDC	Output Current mA	Channel CH	Output Power W	Power Factor	Efficiency	Dimension mm
TLPL-2305INIOT-40CC80-400H	220-240	50-220	80-400	1	40	>0.95	90%	243*30*21
TLPL-2305INIOT-60CC120-550H	220-240	50-220	120-550	1	60	>0.97	92%	243*30*21
TLPL-2305INIOT-80CC100-450H	220-240	50-220	100-450	1	80	>0.97	92%	243*30*21
TLPL-2305INIOT-80CC350-700H	220-240	50-220	350-700	1	80	>0.97	92%	284*30*21
TLPL-2305NIOT-100CC250-1000H	220-240	50-220	250-1000	1	100	>0.98	94%	284*30*21
TLPL-2305NIOT-150CC200-1050H	220-240	100-300	200-1050	1	150	>0.98	90%	355*30*21

NFC D4i Constant Current Single Color Dimmable Driver



US Standard



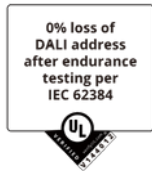
SELV

Product Model	Input Voltage VAC	Output Voltage VDC	Output Current mA	Channel CH	Output Power W	Power Factor	Efficiency	Dimension mm
TLPL-2305INIOT-30CC250-850U	120-277	10-54	250-850	1	30	>0.95	85%	243*30*21
TLPL-2305INIOT-40CC500-1050U	120-277	10-54	500-1050	1	40	>0.95	85%	243*30*21
TLPL-2305INIOT-50CC650-1300U	120-277	10-54	650-1300	1	50	>0.95	87%	284*30*21
TLPL-2305INIOT-60CC900-1700U	120-277	10-54	900-1700	1	60	>0.95	87%	284*30*21
TLPL-2305INIOT-80CC1000-2000U	120-277	10-54	1000-2000	1	80	>0.95	89%	355*30*21



NFC DT8 Constant Current Tunable White Dimmable Driver

TL-Data 251/252/253

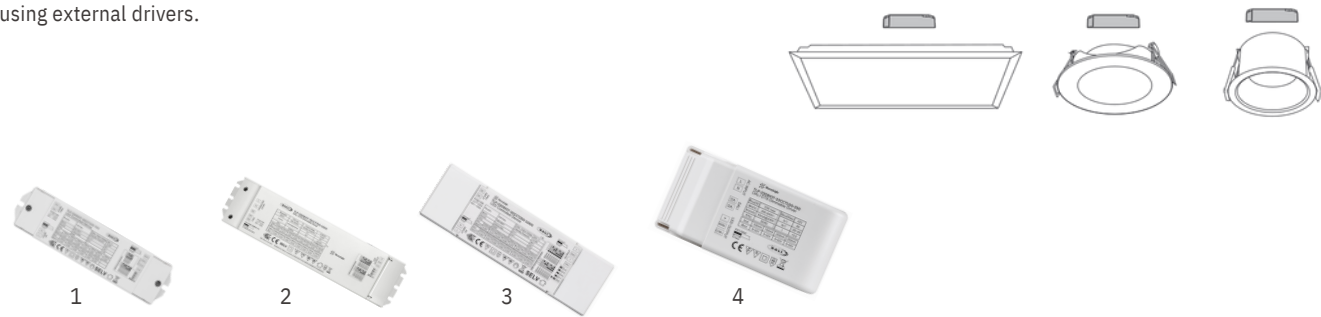


Product Features

- Certification: DALI-2 certified with support for DALI DT8.
- Performance: Designed exclusively for premium products, featuring a high power factor (PF), exceptional efficiency, and low total harmonic distortion (THD).
- Current Adjustment: Minimum current settings can be configured down to 0.1mA with precise step accuracy.
- Functionality: Supports Constant Lumen Output (CLO) for consistent light levels over time.
- Safety Feature: Includes Emergency Mode (EL) for enhanced reliability and safety.
- Dimming Control: Features Push-Dim functionality for convenient dimming.
- Accuracy: Achieves  $\pm 1\%$  current accuracy, setting a world-leading standard.
- Flicker-Free Operation: Ensures flicker-free performance, making it suitable for camera shooting and recording without issues.
- Dimming Depth: Offers a remarkable dimming depth of 1/1000 for precise light adjustments.
- Certifications: Compliant with global high-end certifications, including CCC, TUV ENEC, RCM, and CE.
- NFC Configuration: Provides ultra-full NFC settings for flexible and customizable configuration options.

Standalone Application

Suitable for spotlights, downlights, panel lights, and other lights using external drivers.



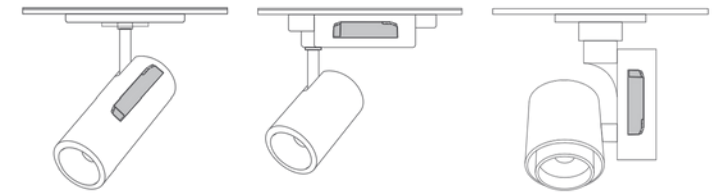
Product Model	Product Picture	Input Voltage VAC/VDC	Output Voltage VDC	Output Current mA	Channel CH	Output Power W	Power Factor	Efficiency	Dimension mm
TLP-2309NIOT-10CCT100-500	1	220-240	3-42	100-500	2	10	>0.94	80%	101*36*25
TLP-2309NIOT-12CCT100-700	2	220-240	6-42	100-700	2	12	>0.97	80%	135*35*20
TLP-2309NIOT-15CCT100-700	2	220-240	6-42	100-700	2	15	>0.97	82%	135*35*20
TLP-2309NIOT-25CCT250-700	3	220-240	6-54	250-700	2	25	>0.97	85%	120*41*28
TLP-2309NIOT-36CCT350-1050	4	220-240	6-54	350-1050	2	36	>0.95	86%	145*45*30
TLP-2309NIOT-45CCT500-1400	4	220-240	6-54	500-1400	2	45	>0.98	89%	145*45*30
TLP-2309NIOT-65CCT500-1500	5	220-240	6-54	500-1500	2	65	>0.98	90%	124*78.8*30

NFC DT8 Constant Current Tunable White Dimmable Driver

TL-Data 251/252/253

Track Lights/Spot Lights, Built-in Application

Compatible with various high and low voltage rail lighting systems, integrated downlights, integrated floodlights, garden lighting solutions, and other luminaires equipped with built-in drivers.

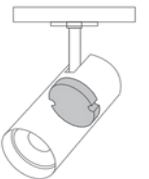


Product Model	Input Voltage VAC/VDC	Output Voltage VDC	Output Current mA	Channel CH	Output Power W	Power Factor	Efficiency	Dimension mm
TLPT-2309NIOT-28CCT150-700	220-240	6-50	150-700	2	28	>0.95	86%	97*43*23.5
TLPT-2309NIOT-38CCT300-1050	220-240	6-50	300-1050	2	38	>0.96	87%	97*43*28
TLPT-2309NIOT-44CCT600-1400	220-240	6-50	600-1400	2	44	>0.96	87%	97*43*30

Track Lights/Spot Lights, Built-in Application

TL-Data 251/252/253

Suitable for all kinds of high/low voltage rail lights, downlights(built-in), floodlights(built-in), garden lights, and other lights using built-in drivers.

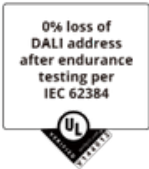


Product Model	Input Voltage VAC/VDC	Output Voltage VDC	Output Current mA	Channel CH	Output Power W	Power Factor	Efficiency	Dimension mm
TLPY-2309NIOT-10CCT100-500	220-240	10-42	100-500	2	10	>0.95	86%	$\varnothing 57 \times 24$
TLPY-2309NIOT-15CCT200-700	220-240	10-42	200-700	2	15	>0.96	87%	$\varnothing 57 \times 24$
TLPY-2309NIOT-25CCT300-850	220-240	10-42	300-850	2	25	>0.96	87%	$\varnothing 65 \times 30$
TLPY-2309NIOT-36CCT600-1200	220-240	10-42	600-1200	2	36	>0.96	87%	$\varnothing 72 \times 30$



NFC DT8 Constant Current Tunable White Dimmable Driver

TL-Data 251/252/253



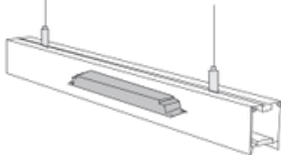
Product Features

- DALI-2 certified, with support for the DALI DT8 protocol.
- Engineered for high-end applications, offering a high power factor (PF), superior efficiency, and low total harmonic distortion (THD).
- Provides precise minimum current setting down to 0.1mA with fine step accuracy.
- Supports Constant Lumen Output (CLO) functionality for consistent performance.
- Integrated Emergency Mode (EL) operation for enhanced safety and reliability.

Linear Application

Compatible with strip lights, tri-proof lights, floor lights, bracket lights, and other linear or ultra-thin lighting solutions.

- Push-Dim functionality for intuitive and convenient lighting control.
- Delivers industry-leading  $\pm 1\%$  current accuracy for precise performance.
- Ensures flicker-free operation, fully compatible with professional camera shooting and recording.
- Offers dimming depth capability down to 1/1000 for ultra-fine light adjustment.
- Certified to meet global high-end standards, including CCC, TUV ENEC, RCM, CE, and more.
- Equipped with extensive NFC configuration options for superior flexibility and customization.



EU Standard



SELV

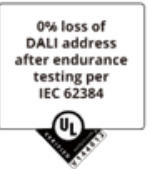
Product Model	Input Voltage VAC/VDC	Output Voltage VDC	Output Current mA	Channel CH	Output Power W	Power Factor	Efficiency	Dimension mm
TLPL-2309NIOT-30CCT250-850	220-240	10-54	250-850	2	30	>0.95	85%	243*30*21
TLPL-2309NIOT-40CCT500-1050	220-240	10-54	500-1050	2	40	>0.95	85%	243*30*21
TLPL-2309NIOT-50CCT650-1300	220-240	10-54	650-1300	2	50	>0.95	87%	284*30*21
TLPL-2309NIOT-60CCT900-1700	220-240	10-54	900-1700	2	60	>0.95	87%	284*30*21
TLPL-2309NIOT-80CCT1000-2000	220-240	10-54	1000-2000	2	80	>0.95	89%	355*30*21

Non-SELV

Product Model	Input Voltage VAC/VDC	Output Voltage VDC	Output Current mA	Channel CH	Output Power W	Power Factor	Efficiency	Dimension mm
TLPL-2309NIOT-40CCT80-400H	220-240	50-220	80-400	2	40	>0.95	90%	243*30*21
TLPL-2309NIOT-60CCT120-550H	220-240	50-220	120-550	2	60	>0.97	92%	243*30*21
TLPL-2309NIOT-80CCT100-450H	220-240	50-220	100-450	2	80	>0.97	92%	243*30*21
TLPL-2309NIOT-80CCT350-700H	220-240	50-220	350-700	2	80	>0.97	92%	284*30*21
TLPL-2309NIOT-100CC250-1000H	220-240	50-220	250-1000	2	100	>0.98	94%	284*30*21
TLPL-2309NIOT-150CC200-1050H	220-240	100-300	200-1050	2	150	>0.98	90%	355*30*21

NFC DT8 Constant Current Tunable White Dimmable Driver

TL-Data 251/252/253



US Standard

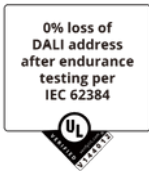


SELV

Product Model	Input Voltage VAC	Output Voltage VDC	Output Current mA	Channel CH	Output Power W	Power Factor	Efficiency	Dimension mm
TLPL-2309NIOT-30CCT250-850U	120-277	10-54	250-850	2	30	>0.95	85%	243*30*21
TLPL-2309NIOT-40CCT500-1050U	120-277	10-54	500-1050	2	40	>0.95	85%	243*30*21
TLPL-2309NIOT-50CCT650-1300U	120-277	10-54	650-1300	2	50	>0.95	87%	284*30*21
TLPL-2309NIOT-60CCT900-1700U	120-277	10-54	900-1700	2	60	>0.95	87%	284*30*21
TLPL-2309NIOT-80CCT1000-2000U	120-277	10-54	1000-2000	2	80	>0.95	89%	355*30*21

NFC D4i Constant Current Tunable White Dimmable Driver

TL-Data 250/251/252/253

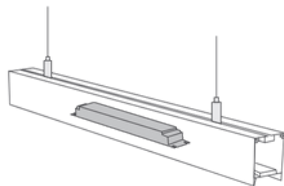


Product Features

- Certification: DALI D4i certification currently in progress.
- Compliance: Certified for DALI-2 with support for the DALI DT8 protocol.
- Performance: Designed for premium products, featuring a high power factor (PF), superior efficiency, and low total harmonic distortion (THD).
- Current Adjustment: Minimum current settings can be fine-tuned down to 0.1mA with high precision.
- Functionality: Supports Constant Lumen Output (CLO) functionality, ensuring consistent light output over time.
- Safety Feature: Includes Emergency Mode (EL) capability for enhanced safety and reliability.
- Application: Optimized for linear applications.
- Dimming Control: Features Push-Dim functionality for intuitive and straightforward dimming control.
- Accuracy: Provides industry-leading  $\pm 1\%$  current accuracy for precise light management.
- Flicker-Free Performance: Delivers flicker-free operation, making it ideal for camera shooting and recording applications.
- Dimming Depth: Achieves a remarkable dimming depth of up to 1/1000 for fine-tuned light adjustments.
- Certifications: Compliant with a range of global high-end certifications, including CCC, TUV ENEC, RCM, and CE.
- NFC Configuration: Offers comprehensive NFC configuration options, allowing for flexible and customizable settings.
- Built-in Power Supply: Includes a built-in DALI-250 bus power supply, ensuring seamless connectivity with DALI-2 sensors.

Suitable for strip lights, tri-proof lights, floor lights, bracket lights, and other linear or ultra-thin lights.

EU Standard



SELV

Product Model	Input Voltage VAC/VDC	Output Voltage VDC	Output Current mA	Channel CH	Output Power W	Power Factor	Efficiency	Dimension mm
TLPL-2309iNIOT-30CCT250-850	220-240	10-54	250-850	2	30	>0.95	85%	243*30*21
TLPL-2309iNIOT-40CCT500-1050	220-240	10-54	500-1050	2	40	>0.95	85%	243*30*21
TLPL-2309iNIOT-50CCT650-1300	220-240	10-54	650-1300	2	50	>0.95	87%	284*30*21
TLPL-2309iNIOT-60CCT900-1700	220-240	10-54	900-1700	2	60	>0.95	87%	284*30*21
TLPL-2309iNIOT-80CCT1000-2000	220-240	10-54	1000-2000	2	80	>0.95	89%	355*30*21

Non-SELV

Product Model	Input Voltage VAC/VDC	Output Voltage VDC	Output Current mA	Channel CH	Output Power W	Power Factor	Efficiency	Dimension mm
TLPL-2309iNIOT-40CCT80-400H	220-240	50-220	80-400	2	40	>0.95	90%	243*30*21
TLPL-2309iNIOT-60CCT120-550H	220-240	50-220	120-550	2	60	>0.97	92%	243*30*21
TLPL-2309iNIOT-80CCT100-450H	220-240	50-220	100-450	2	80	>0.97	92%	243*30*21
TLPL-2309iNIOT-80CCT350-700H	220-240	50-220	350-700	2	80	>0.97	92%	284*30*21
TLPL-2309iNIOT-100CC250-1000H	220-240	50-220	250-1000	2	100	>0.98	94%	284*30*21
TLPL-2309iNIOT-150CC200-1050H	220-240	100-300	200-1050	2	150	>0.98	90%	355*30*21

NFC D4i Constant Current Tunable White Dimmable Driver

TL-Data 250/251/252/253



US Standard



SELV

Product Model	Input Voltage VAC	Output Voltage VDC	Output Current mA	Channel CH	Output Power W	Power Factor	Efficiency	Dimension mm
TLPL-2309iNIOT-30CCT250-850U	120-277	10-54	250-850	2	30	>0.95	85%	243*30*21
TLPL-2309iNIOT-40CCT500-1050U	120-277	10-54	500-1050	2	40	>0.95	85%	243*30*21
TLPL-2309iNIOT-50CCT650-1300U	120-277	10-54	650-1300	2	50	>0.95	87%	284*30*21
TLPL-2309iNIOT-60CCT900-1700U	120-277	10-54	900-1700	2	60	>0.95	87%	284*30*21
TLPL-2309iNIOT-80CCT1000-2000U	120-277	10-54	1000-2000	2	80	>0.95	89%	355*30*21



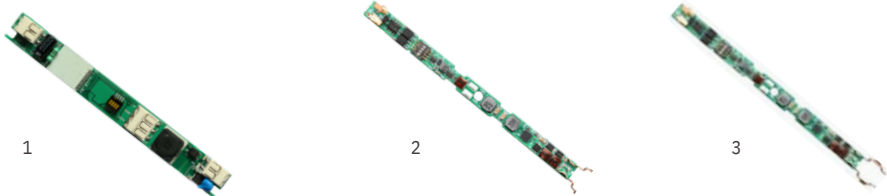
## Magnetic Track LED Dimmable Driver

### Product Features

- Specially engineered for magnetic track lighting and linear lighting systems, eliminating high-frequency noise interference.
- Accepts a DC 48V input with a maximum total output power of 30W.
- Offers 1 or 2 channel constant current output, with selectable current levels via DIP switch configuration.
- Provides deep, smooth dimming capabilities down to 0.1%, ensuring flicker-free operation.
- Integrated DALI-2 interface for advanced control.
- Supports dimming and color temperature adjustments.

### Magnetic Track Built-in Application

Compatible with various high and low voltage track lighting systems, integrated downlights, integrated floodlights, garden lighting fixtures, and other luminaires utilizing built-in drivers.

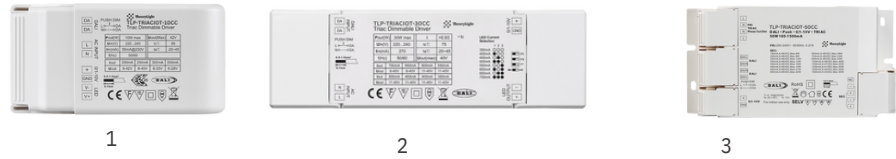


Product Model	Product Picture	Dimming Interface	Input Voltage VDC	Output Voltage VDC	Output Current*Channel mA	Channel CH	Output Power W	EMC	Dimension mm
TLP-2305IOT-MT-48VCC100-700T 1		DALI DT6	48	3-42	100-700	1	30	✓	125*14
TLP-2309IOT-MT-48VCCT100-700T 1		DALI DT8	48	3-42	100-700	2	30	✓	125*14
TLP-2305IOT-MT-48VCC100-700 2		DALI DT6	48	3-42	100-700	1	30	✓	125*14
TLP-2309IOT-MT-48VCCT100-700 2		DALI DT8	48	3-42	100-700	2	30	✓	125*14
TLP-2305IOT-MT-48VCC100-700S 3		DALI DT6	24-48	3-40	100-700	1	20	✓	113*8*3

## 4 in 1 Constant Current Dimmable Driver

### Product Features

- > LED dimmable driver with Triac+DALI/Push+0/1-10V dimming interfaces
- > In compliance with IEC 62386-101:2014, IEC 62386-102:2014, IEC 62386-207 Ed2
- > Built-in DALI-2 interface, DALI DT6 device
- > Multiple current gears selectable by DIP switch
- > High power factor and efficiency
- > Compatible with universal Triac dimmers
- > Compatible with universal 0/1-10V dimmers
- > Error report function



Product Model	Product Picture	Input Voltage VAC	Output Voltage VDC	Output Current A	Channel CH	Output Power W	Power Factor	Efficiency	Dimension mm
TLP-TRIACIOT-10CC	1	220-240	6-42	200/250/200/250350/550/600/650/700	1	10	>0.9	80%	103.7*52.6*30
TLP-TRIACIOT-30CC	2	220-240	8-48	180/200/250/300/350/400/450/500/600/700/900/1000/1050/1200/1400/1500	1	30	>0.9	85%	170*53.4*28
TLP-TRIACIOT-50CC(4 in 1)	3	220-240	8-48		1	50	>0.9	87%	164.6*83*34.5

## 4 in 1 Constant Voltage Dimmable Driver

### Product Features

- LED dimmable driver equipped with Triac, DALI/Push, and 0/1-10V dimming interfaces.
- Conforms to IEC 62386-101:2014, IEC 62386-102:2014, and IEC 62386-207 Ed2 standards.
- Features an integrated DALI-2 interface, fully compatible with DALI DT6 devices.
- Ensures a high power factor and optimized energy efficiency.

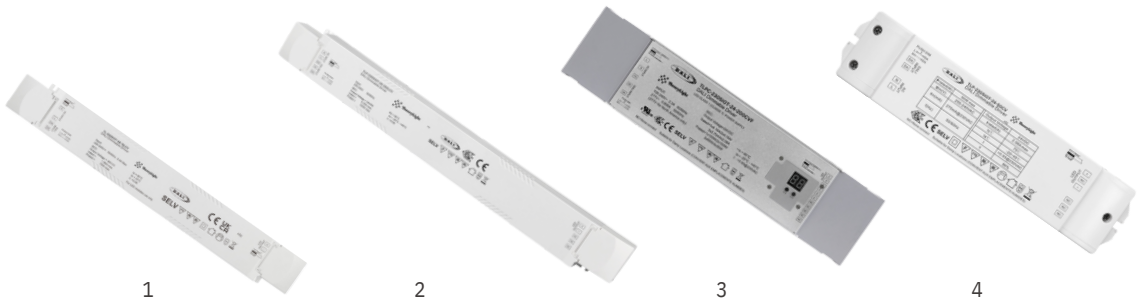


Product Model	Product Picture	Input Voltage VAC	Output Voltage VDC	Output Current A	Channel CH	Output Power W	Power Factor	Efficiency	Dimension mm
TLP-TRIACIOT-24-30CV	1	220-240	24	1.25	1	30	>0.9	86%	170*53.4*28
TLPC-TRIACIOT-24-200CV	2	220-240	24	8.33	1	200	>0.95	93%	330*79*39

## Constant Voltage DT6 Dimmable Driver

### Product Features

- DALI-2 certified and compliant with DALI DT6 device standards. - 24V/48V isolated constant voltage driver.
- Features PWM deep dimming with PstLM ≤ 1.0 and SVM ≤ 0.4 for reduced flicker.
- Standby power consumption is less than 0.5W, in compliance with the latest ErP standards. - Designed for high-performance products, offering high power factor (PF), high efficiency, and low total harmonic distortion (THD). - Backed by a five-year warranty for quality assurance.

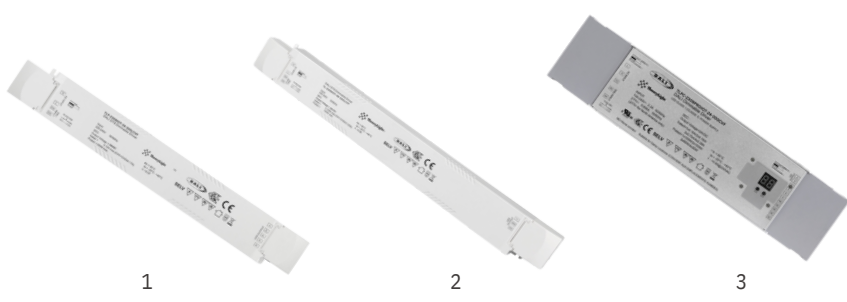


Product Model	Product Picture	PushDim	Input Voltage VAC	Output Voltage VDC	Output Current A	Channel CH	Output Power W	Power Factor	Efficiency	Dimension mm
TLP-2305IOT-24-30CV	1	Yes	200-240	24	1.25	1	30	>0.9	86%	170*53.4*28
TLP-2305IOT-24-50CV	2	Yes	200-240	24	2.08	1	50	>0.9	88%	210*50*32
TLP-2305IOT-24-75LCV	3	Yes	220-240	24	3.12	1	75	>0.95	89%	306.6*43*30
TLP-2305IOT-48-75LCV	3	Yes	220-240	48	1.56	1	75	>0.95	89%	306.6*43*30
TLP-2305IOT-24-100LCV	3	Yes	220-240	24	4.16	1	100	>0.97	93%	306.6*43*30
TLP-2305IOT-48-100LCV	3	Yes	220-240	48	2.08	1	100	>0.97	93%	306.6*43*30
TLP-2305IOT-24-150LCV	3	Yes	220-240	24	6.25	1	150	>0.98	93%	365.6*43*30
TLP-2305IOT-48-150LCV	3	Yes	220-240	48	3.12	1	150	>0.98	93%	365.6*43*30
TLPC-2305IOT-24200CVF	4	Yes	100-277	24	8.4	4	200	>0.98	93%	330*79*39

## Constant Voltage DT8 Dimmable Driver

### Product Features

- DALI-2 certified, compatible with DALI DT8 devices.
- 24V/48V isolated constant voltage driver.
- Supports PWM deep dimming with PstLM ≤ 1.0 and SVM ≤ 0.4, ensuring minimal flicker.
- Standby power consumption is less than 0.5W, compliant with the latest ErP standards.
- Designed for premium products, featuring high power factor (PF), high efficiency, and low total harmonic distortion (THD).
- Provides a five-year warranty, ensuring quality and reliability.






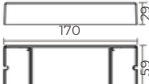

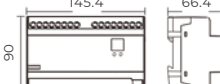
Product Model	Product Picture	PushDim	Input Voltage VAC	Output Voltage VDC	Output Current A	Channel CH	Output Power W	Power Factor	Efficiency	Dimension mm
TLP-2309PROIOT-24-75CVF	1	Yes	100-277	24	3.12	4	75	>0.95	86%	244*64*32
TLP-2309IOT-24-75LCVT	TLP-2	Yes	220-240	24	3.12	2	75	>0.95	89%	306.6*43*30
2309IOT-24-75LCVF	2	Yes	220-240	24	3.12	4	75	>0.95	89%	306.6*43*30
TLP-2309IOT-48-75LCVT	2	Yes	220-240	48	1.56	2	75	>0.95	89%	306.6*43*30
TLP-2309IOT-48-75LCVF	2	Yes	220-240	48	1.56	4	75	>0.95	89%	306.6*43*30
TLP-2309IOT-24-100LCVT	2	Yes	220-240	24	4.16	2	100	>0.97	93%	306.6*43*30
TLP-2309IOT-24-100LCVF	2	Yes	220-240	24	4.16	4	100	>0.97	93%	306.6*43*30
TLP-2309IOT-48-100LCVT	2	Yes	220-240	48	2.08	2	100	>0.97	93%	306.6*43*30
TLP-2309IOT-48-100LCVF	2	Yes	220-240	48	2.08	4	100	>0.97	93%	306.6*43*30
TLP-2309IOT-24-150LCVT	2	Yes	220-240	24	6.25	2	150	>0.98	93%	365.6*43*30
TLP-2309IOT-24-150LCVF	2	Yes	220-240	24	6.25	4	150	>0.98	93%	365.6*43*30
TLP-2309IOT-48-150LCVT	2	Yes	220-240	48	6.25	2	150	>0.98	93%	365.6*43*30
TLP-2309IOT-48-150LCVF	2	Yes	220-240	48	6.25	4	150	>0.98	93%	365.6*43*30
TLPC-2309PROIOT-24200CVF	3	Yes	100-277	24	8.4	4	200	>0.98	93%	330*79*39

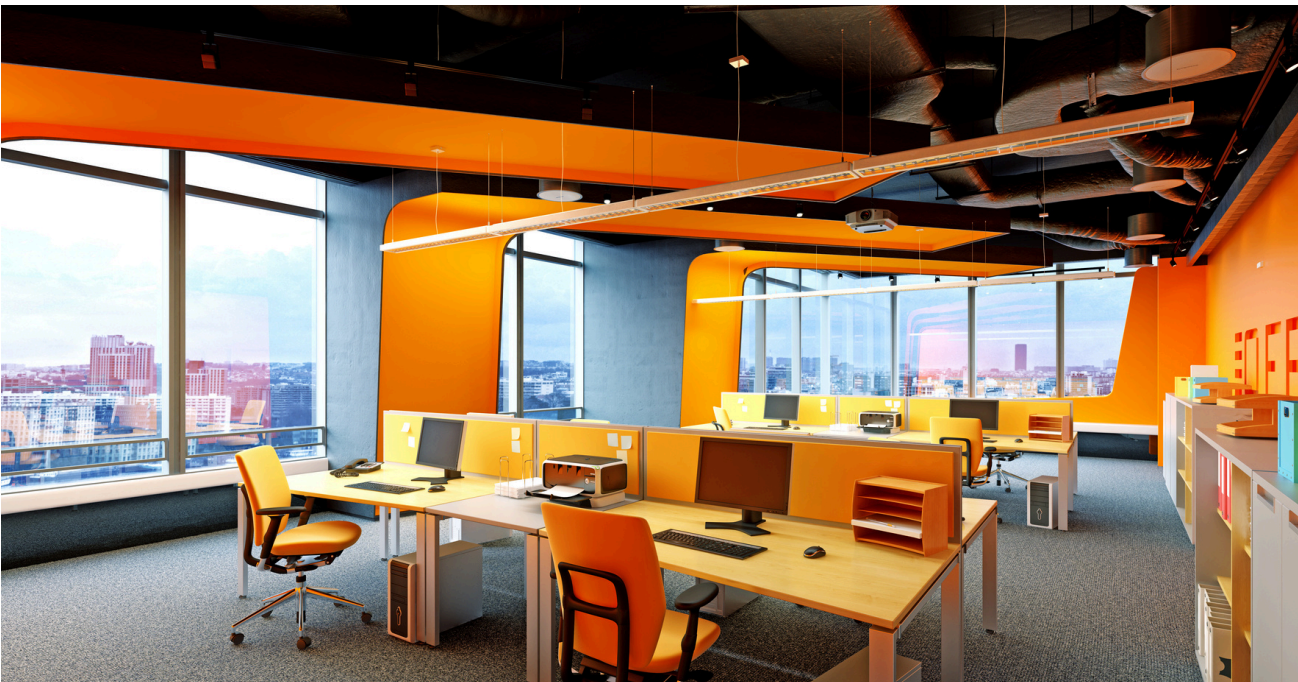
Phase Dimmer

DALI Phase Dimmer

- Compatible with both forward-phase (TRIAC) and reverse-phase control dimmers.
  - Suitable for dimming and switching single-color dimmable LED lamps, as well as traditional incandescent and halogen lighting.
- Features a built-in DALI-2 interface, compatible with DALI DT6 devices.
  - Supports both resistive and capacitive load types.
  - Incorporates an innovative minimum brightness setting function.
  - Ensures safety and reliability with a fully isolated design.



	
<div><div>Model</div><div>Input Voltage</div><div>Output Current</div><div>Output Power</div></div> <div>TL-2303SACIOT- HP 100-240Vac 1.8A max. 400W</div>	<div><div>Model</div><div>Input Voltage</div><div>Output Current</div><div>Output Power</div></div> <div>TL-2303SACIOT- HPW 100-240Vac 1.8A max. 400W</div>
<div>Feature</div> <div>Mini size</div>	<div>Feature</div> <div>Mini size</div>

			
<div><div>Model</div><div>Input Voltage</div><div>Output Current</div><div>Output Power</div></div> <div>TL-2303ACIOT 100-240Vac 1.2A*2CH 240- 576W</div>	<div><div>Model</div><div>Input Voltage</div><div>Output Current</div><div>Output Power</div></div> <div>TL-2303ACIOT-1CH- 500W 100-240Vac 2.4A*1CH 500W</div>	<div><div>Model</div><div>Input Voltage</div><div>Output Current</div><div>Output Power</div></div> <div>TL-2303ACIOT-4CH-DIN 100- 240Vac 1.8A*4 CH 800W*1CH, 600W*2CH, 500W*3CH, 400W*4CH</div>	<div><div>Feature</div><div>DIN RAIL installation, 4 channels</div></div>
<div>Feature</div> <div>2 channels</div>	<div>Feature</div> <div>1 channel</div>	<div>Feature</div> <div>DIN RAIL installation, 4 channels</div>	



Phase Dimmer

AC Phase Dimmer

	
<div><div>Model</div><div>Input Voltage</div><div>Current</div><div>Output Current</div><div>Output Power</div></div> <div>TL-DA9041A-D 100-240Vac 1.1A max. 0.1-1.1A 250W max. for Incandescent, 200W max. for LED Mini size, DALI- 2</div>	<div><div>Model</div><div>Input Voltage</div><div>Current</div><div>Output Current</div><div>Output Power</div></div> <div>TL-DA9041B-D 100-240Vac 1.1A max. 0.1-1.1A 250W max. for Incandescent, 200W max. for LED Mini size, DALI- 2</div>
<div>Feature</div>	<div>Feature</div>



DIN rail smart Dimmer with dry contacts

Engineered to fit a standard 1P DIN rail size, this unit is ideal for installation within electrical enclosures. Its robust construction and straightforward installation process offer a convenient and reliable solution.

Model	TL-DA9042AIOT-D 100-240Vac
Input Voltage	1.8A max.
Input Current	0.1-1.8A
Output Current	400W max. for Incandescent, 200W
Output Power	max. for LED
Size	90x66x18mm





## Relay

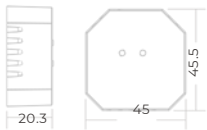
### DALI Relay

- DALI Relay: Enables switching of loads on and off via DALI control.
- Compliant with DALI standard specifications.
- Fully adheres to DALI compliance requirements.



Model	TL-2701BIOT
Input Voltage	100- 240Vac
Switch Voltage	100- 240Vac
Output Power	A50C0-AWC

#### Feature

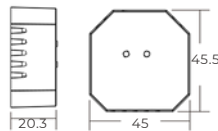


Model	TL-2701SIOT Power
Input Voltage	by DALI bus Max.
Switch Voltage	30Vdc/250Vac
Output Power	300/1000W max.

TL-2701SIOT-N
Power by DALI bus
Max.
30Vdc/100-240Vac
300/1000W max.

Feature	Mini size
---------	-----------

DALI relay module + DALI to 0/1-10V
-------------------------------------



Model	TL-2701SWIOT
Input Voltage	Power by DALI bus
Switch Voltage	Max.
Output Power	30Vdc/250Vac
	300/1000W max.

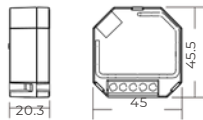
Feature	Mini size
---------	-----------

TL-2701SWIOTN Power
by DALI bus Max.
30Vdc/100-240Vac
300/1000W max.

DALI relay module + DALI to 0/1-10V
-------------------------------------

### DALI-2 Relay Module

- DALI-2 relay module.
- Operates with a 100-240VAC power supply.
- Features a single relay channel, supporting up to 1000W for incandescent loads and 300W for LED loads.
- Enables integration of non-DALI input loads into the DALI system.
- Compatible with universal DALI systems and market-standard master controllers.
- Compact design allows for easy installation in a standard wall box.

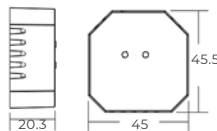


Model	TL-2701SIOT-DT7
Output Power	300/1000W max.
Input Voltage	Power by DALI bus
Switch Voltage	Max. 30Vdc/250Vac

TL-2701SIOT-DT7AC
300/1000W max.
100-240Vac
100-240Vac

Feature	DALI-2 certified, DT7 device
---------	------------------------------

DALI-2 certified, DT7 device
------------------------------



Model	TL-2701SWIOT-DT7
Output Power	300/1000W max.
Input Voltage	Power by DALI bus
Switch Voltage	Max. 30Vdc/250Vac

Feature	DALI-2 certified, DT7 device
---------	------------------------------

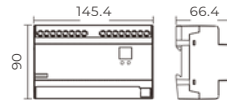
TL-2701SWIOT-DT7AC
300/1000W max.
100-240Vac
100-240Vac

DALI-2 certified, DT7 device
------------------------------

## Relay

### DIN Rail 4 Channles DALI-2 Relay

- DALI relay module, certified to DALI-2 standards.
- Operates with a 100-240VAC power supply.
- Features 4 relay channels, each with a maximum load of 16A.
- DALI address assignment can be manually configured via a digital display.
- DALI address can be set to 1, 2, 3, or 4.
- Allows integration of non-DALI input loads into the DALI circuit.
- Compatible with universal DALI systems and market-standard master controllers.
- Designed for DIN rail installation, fitting standard 35mm DIN rails.



Model	TL-2701IOT-DT7 100-240Vac Max.
Power Supply	30Vdc/250Vac Max.
Switch Voltage	3680W*4CH @230Vac
Output Power	

Feature	DALI-2, DT7 device, 4 channels
---------	--------------------------------

### DIN Rail 4 Channles DALI-2 Relay

- DALI relay module, certified to DALI-2 standards.
- Operates with a 100-240VAC power supply.
- Equipped with 4 relay channels, each capable of handling up to 12A.
- Allows assignment of up to 4 DALI addresses via a master controller.
- Facilitates the integration of non-DALI input loads into the DALI system.

integrated in the DALI circuit

- V- Features zero crossing detection for extended switching lifecycle.
- Designed for DIN rail installation, compatible with standard 35mm DIN rails.



NEW



Model	TL-2701DINIOT-DT7 100-240VAC Max.
Input Voltage	30Vdc/250Vac
Switch Voltage	Max.2760W*4CH @ 230VAC
Output Power	

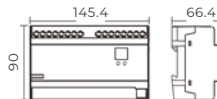
Feature	DALI-2, DT7 device, 4 channels
---------	--------------------------------

### DALI Relay Module 4x16A

This DALI 4-channel relay module, designed for rail mounting, is engineered to integrate traditional non-smart fixtures or high-power electrical devices into a DALI system, enabling smart technology control. It features four independent dry-contact outputs, each capable of handling up to 16A, accommodating various load types including resistive (e.g., incandescent lamps), capacitive (e.g., electronic ballasts), and inductive (e.g., motors). This module is ideal for home automation and smart lighting applications, offering enhanced control and energy management capabilities.



NEW



Model	TL-DARM16IOT-DINA
Input Voltage	100- 240Vac 4x16A
Output Current	max. @240Vac
Output Power	4x3680W
	max.@230Vac
	4x480W@30Vdc

Feature	DALI-2, 4 channels
---------	--------------------

## Rotary Knob

### DALI MCU

- Each control circuit can provide up to 100mA of DALI power, supporting up to 50 DALI devices.
- Ensures immediate and seamless response from the lighting system when brightness levels are adjusted via any control device.
- Offers comprehensive, user-friendly control over lighting levels at all times.
- Features an innovative function to power the DALI bus while connected to AC mains.
- Operates from the DALI bus when not connected to AC mains.
- Operating voltage: 100-240VAC, with power also supplied by the DALI bus.



TL-2400RBIOT-NF-DIM  
TL-2400RBIOT-NF-CCT  
TL-2400RBIOT-NF-RGB



TL-2400RAIOT-DIM  
TL-2400RAIOT-CCT  
TL-2400RAIOT-RGB  
TL-2400RG-DIM-A  
TL-2400RG-CCT-A



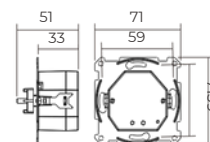
TL-2400RBIOT



TL-2400RBIOT-CCT



TL-2400RBIOT-RGB



TL-2400RBIOT-NFW-DIM  
TL-2400RBIOT-NFW-CCT  
TL-2400RBIOT-NFW-RGB



TL-2400RAIOTW-DIM  
TL-2400RAIOTW-CCT  
TL-2400RAIOTW-RGB



TL-2400RBIOT-W

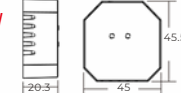


TL-2400RBIOTW-CCT



TL-2400RBIOTW-RGB

NEW



### DALI Rotary Knob

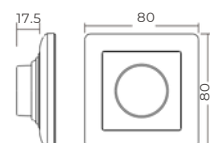
- Complies with DALI standard protocol.
- Powered by the DALI bus, allowing multiple dimming controllers to be installed on a single channel.
- No external power supply required; power is provided by the DALI bus with a consumption current of 4mA.
- Allows selection and control of DALI groups and addresses.
- Enables broadcast control of all devices on the DALI circuit.
- Available with optional plastic or glass front plates.
- Features backlighting to indicate dimming status.
- Operating voltage: powered by the DALI bus.



TL-2410RGIOT-DIM-GL  
DT6, Group selection,  
broadcast function,  
backlight



TL-2410RGIOT-DIM-PL  
DT6, Group selection,  
broadcast function,  
backlight



## Push Button

### DALI Push Button

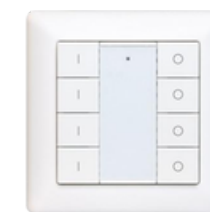
- 2-8 key DALI keypad controller.
- Compatible with DALI DT6/DT8 versions, controlling single-color, CCT, and RGBW LED lights.
- Allows selection and control of DALI groups and scenes.
- Powered via the DALI bus, eliminating the need for an additional power supply.



TL-2422K2IOT- DIM-G1  
DT6, 1 group



TL-2422K4IOT-DIM-G2  
DT6, 2 groups



TL-2422K8IOT-DIM-G4  
DT6, 4 groups



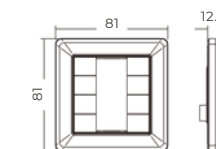
TL-2422K8IOT-DIM-G1-S4  
DT6, 1 group, 4 scenes



TL-2422K8IOT-CCT-G1-S2(DT8)  
DT8 color type Tc,  
1 group, 2 scenes



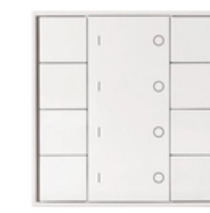
TL-2422K8IOT-RGBW-G1-S2(DT8)  
DT8 color type RGBW,  
1 group, 2 scenes



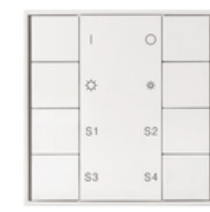
TL-2422NK2IOT-DIM-G1-PL  
DT6, 1 group



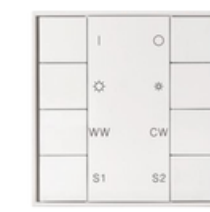
TL-2422NK4IOT-DIM-G2-PL  
DT6, 2 groups



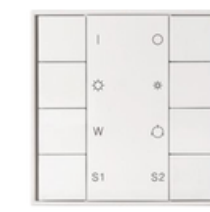
TL-2422NK8IOT-DIM-G4-PL  
DT6, 4 groups



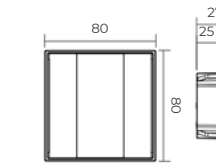
TL-2422NK8IOT-DIM-G1-S4-PL  
DT6, 1 group, 4 scenes



TL-2422NK8IOT-CCT-G1-S2(DT8)-PL  
DT8 color type Tc,  
1 group, 2 scenes



TL-2422NK8IOT-RGBW-G1-S2(DT8)-PL  
DT8 color type RGBW,  
1 group, 2 scenes



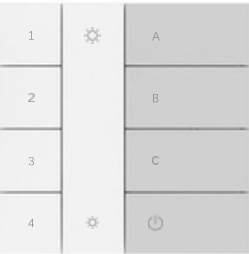
DALI Panel

DALI Panel

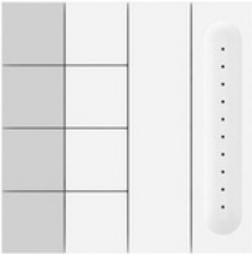
NEW

The DALI version is powered by the DALI bus and features two adjustment knobs on the back, allowing for independent configuration of group and scene control. This setup enables seamless management of single-color, dual-color, RGB, or RGB+CCT lighting systems.

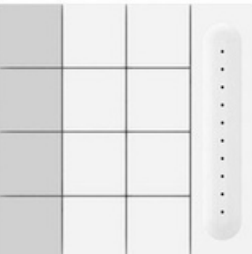
- Input Voltage: Powered by the DALI bus
- Current Consumption: 2mA
- Material Color: Available in Black or White
- Dimensions: 86 x 86 x 40mm



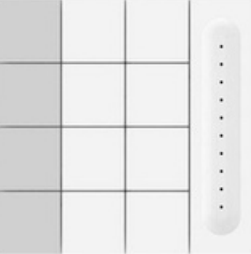
TL-DA9010KIOT-DIM-EU  
(DALI DT6 Panel)  
DT6 DIM, 4 Group, 3 Scene



TL-DA9010KIOT-CCT-EU  
(DALI DT8 CCT Panel)  
DT8 TC, 4 Group, 3 Scene



TL-DA9010KIOT-RGB-EU  
(DALI DT8 RGB+CCT Panel)  
DT8 XY/RGB, 4 Group, 3 Scene



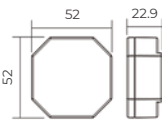

TL-DA9010KIOT-5C-EU  
(DALI DT8 RGB+CCT Panel)  
DT8 XY+TC, 4 Group, 3 Scene



Push Button Coupler

DALI Module with Momentary Switch


- **Push Button Coupler:** Controls up to 4 DALI addresses or scenes. - **Bus Detective Function:** Allows multiple dimming couplers to be installed on a single DALI bus channel. - **External Switch Control:** Provides convenient and flexible operation. - **Compact Design:** Small size facilitates easy installation in a wall box.



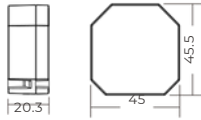
Model	TL-2400LCIOT	TL-2400SCIOT
Input Voltage	Power by DALI bus	Power by DALI bus
Feature	4 different lamp addresses	4 different scene addresses

NFC Programmable 2-Key Push to DALI Control Unit

- NFC Programmable 2-Key Push-to-DALI Control Unit
- Power Supply: Operates on 100-240VAC or can be powered by the DALI bus
- Inputs: Supports 2 channels for push switch input
- Output: Features 1 DALI output channel with a built-in 50mA DALI power supply
- Configuration: Customizable device types (DT6, Tc, XY coordinates, RGBWAF) and control settings via NFC App
- Push Switch Configuration: Each push switch's control target and associated DALI commands can be fully programmed through the NFC App
- Compatibility: Compatible with any standard push switches
- Applications: Suitable for offices, meeting rooms, classrooms, and similar environments requiring flexible DALI control



NEW



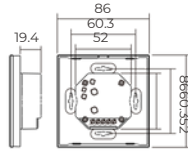
Model	TL-2400PDIOT
Input Voltage	100-240VAC/DALI bus powered
Feature	Standalone with built-in DALI power, PD or CD mode can be set



## Touch Panel

### DALI Touch Panel

- DALI DT6/DT8 Touch Panel
- Configuration Options: Supports setting of DALI address, group, and scene configurations
- Power Input: Available in AC 100-240V or DC 12-24V versions
- AC Version: Features a built-in 100mA DALI power supply, capable of powering up to 50 DALI electronic control gear (ECGs) while being powered by the DALI bus when not connected to AC mains



TL-2300TS-DIM-EU (DDTT66), DIM, 4 groups, 3 scenes



TL-2300NTRIOT-DIM-EU (DT6) DT6, DIM, 1 group, 4 scenes



TL-2300NTRIOT-G4-DIM-EU (DT6) DT6, DIM, 4 groups, 4 scenes



TL-2300NTRIOT-G4-CCT-EU (DT8) DT8, CCT, 4 groups, 4 scenes



TL-2300NTRIOT-CCT-EU (DT8) DT8, CCT, 1 group, 4 scenes



TL-2300NTRIOTIOT-G4-CCT-EU (DT8) DT8, CCT, 4 groups, 4 scenes



TL-2300TRIOT-RGBW-EU (DT8) DT8, RGBW, 1 group, 4 scenes



TL-2300TRIOT-G4-RGBW-EU (DT8) DT8, RGBW, 4 groups, 1 scene



TL-2300NTRIOT-RGBW-EU (DT8) DT8, RGBW, 1 group, 4 scenes



TL-2300NTRIOT-G4-RGBW-EU (DT8) DT8, RGBW, 4 groups, 1 scene



### DALI Touch Panel

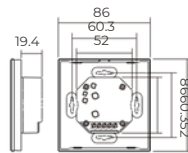
- \*\*Controlled Group/Scene Selection:\*\* Configured via rotary switch
- \*\*Type:\*\* DALI touch controller
- \*\*Operating Voltage:\*\* Powered by the DALI bus



TL-2422T6IOT-DIM-G1-S6  
DT6, 1 group, 6 scenes



TL-2422T6IOT-DIM-G1-S3  
DT6, 1 group, 3 scenes



## DALI-2 Push Button

## DALI-2 Touch Panel

### DALI-2 Push Button

- DALI-2 Control Device: Complies with IEC62386-101, IEC62386-103, IEC62386-301, and IEC62386-332 standards
- Feedback Functionality: Enables feedback capabilities for enhanced monitoring and control
- Integration: Fully compatible with DALI-2 compliant central control units
- Multi-Master Capability: Supports the installation of multiple modules on the same DALI line, enabling multi-master operation
- Configuration: Easy configuration via a DALI-2 compliant central controller
- Operating Voltage: Powered directly by the DALI bus for streamlined installation without external power



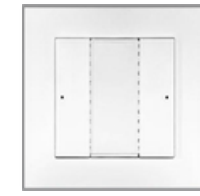
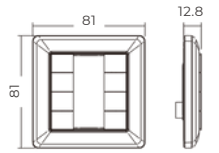
TL-2422K2IOT-DA2



TL-2422K4IOT-DA2



TL-2422K8IOT-DA2



TL-2422K2IOT-DA2-WSK



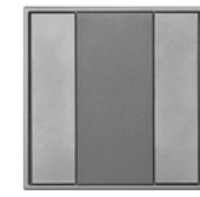
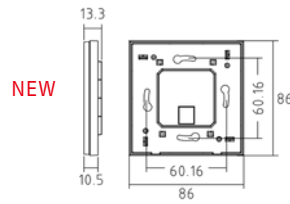
TL-2422K4IOT-DA2-WSK



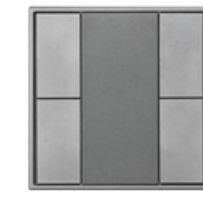
TL-2422K6IOT-DA2-WSK



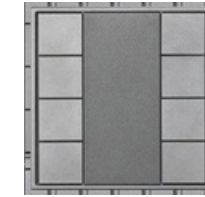
TL-2422K8IOT-DA2-WSK



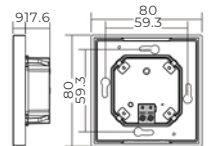
TL-2422NK2IOT-DA2



TL-2422NK4IOT-DA2



TL-2422NK8IOT-DA2



### DALI-2 Touch Panel

- DALI-2 Control Device: Fully compliant with IEC62386-101, IEC62386-103, IEC62386-301, and IEC62386-332 standards
- Feedback Functionality: Supports real-time feedback communication for enhanced system monitoring
- Integration: Specifically designed for seamless use with DALI-2 compliant central control units
- Multi-Master Capability: Supports the installation of multiple modules on the same DALI line for expanded control
- Configuration: Offers simple and efficient setup via a DALI-2 compliant central controller
- Operating Voltage: Powered directly by the DALI bus, ensuring easy installation without the need for additional power supplies



TL-2422T2IOT-DA2



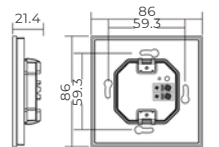
TL-2422T4IOT-DA2



TL-2422T6IOT-DA2



TL-2422T8IOT-DA2



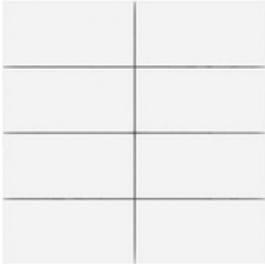
## DALI-2 Panel

### DALI-2 Panel

The DALI-2 version is a standard DALI-2 device, with button functions that can be easily configured using DALI host software.

- Input Voltage: Powered by the DALI bus
- Current Consumption: 2mA
- Material Color: Available in Black or White
- Dimensions: 86 x 86 x 40mm

NEW



TL-DA9010K8IOT-DA2-EU

### DALI Professional Master Panel

The Wall Display is an intuitive 4-inch panel designed for centralized control of your DALI system, featuring a minimalist design and customizable home screen to seamlessly integrate with your interior and adapt to your needs. The panel can be connected to PC software via an RJ45 port for easy configuration.

- Device Compatibility: Supports DT6, DT8 Tc, DT8 XY, DT8 RGBWA control gear device types, along with DALI-2 input devices
- Channel Capacity: Each DALI channel accommodates up to 64 control gears and 64 DALI-2 input devices
- Group and Scene Management: Each channel manages up to 16 groups for control gears, 32 groups for input devices, and up to 16 DALI scenes
- Power Supply: Integrated 230mA DALI power supply, removing the need for external wiring
- PC Connectivity: Connects to a Windows PC via an RJ45 port for easy configuration
- Additional Features: Includes a built-in battery and real-time clock (RTC), enabling timer and cycle schedule setups, as well as bionic scheduling for Human Centric Lighting (HCL) applications

NEW



TL-2300TIOT-LCD4

## DALI-2 Rotary Dimmer     Scene Controller

### DALI-2 Rotary Dimmer

- DALI-2 Certified Rotary & Push Button Switch
- Control Modes: Supports both push button and rotary movement functions for versatile control
- Power Supply: Powered directly by the DALI bus, with a power consumption of less than 12mA
- Configuration: Configurable via a DALI-2 compliant central controller for tailored operation
- Multi-Module Capability: Allows installation of multiple units on the same DALI line for expanded control
- Functionality: Fully customizable settings through the master controller for optimized user experience



Model  
Input Voltage  
Size

TL-2410RIOT-DA2  
Power by DALI bus  
80\*80\*17.5

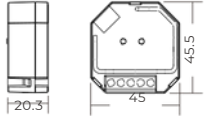
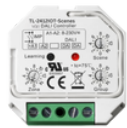


Model  
Input Voltage  
Size

TL-2400RIOT-DA2  
Power by DALI bus  
80\*80\*53

### DALI Scene Controller

- DALI Scene Controller for Motion Sensors
- Group Control: Capable of managing up to 16 individual groups for flexible lighting control
- Broadcast Functionality: Supports broadcast control to manage all devices on the DALI circuit simultaneously
- Delay Times: Provides 16 selectable delay time settings, adjustable from 0 to infinity for customized operation
- Sensor Compatibility: Compatible with various motion sensor types, including PIR and microwave sensors for versatile detection



Model  
Input Voltage

TL-2412IOT-Scenes  
Power by DALI bus

TL-2412IOT-Scenes-B  
Power by DALI bus

Feature

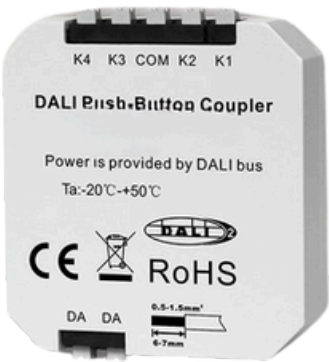
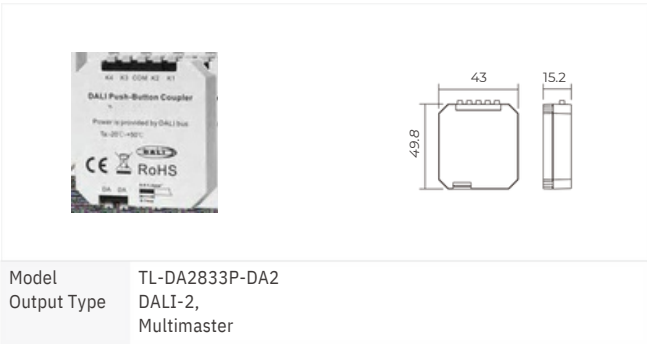
Scene, group, delay time settable

Group, delay time settable

DALI-2 Push Button Coupler

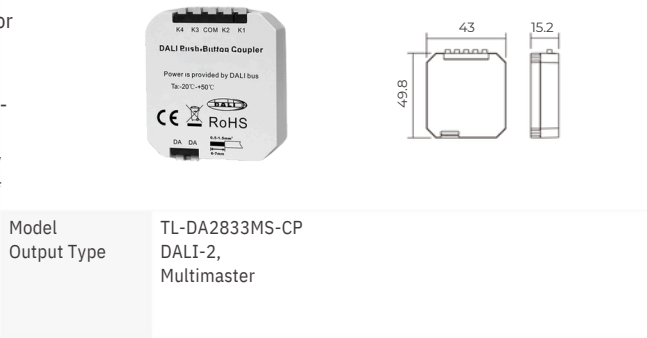
DALI-2 Push-Button Coupler

- \*\*DALI-2 Control Device:\*\* Integrates existing push switches into the DALI system
- \*\*Push Button Instances:\*\* Provides four DALI-2 push button instances for straightforward integration
- \*\*Compatibility:\*\* Suitable for use with DALI-2 compliant central control units
- \*\*Installation:\*\* Easily installed in a flush-mounted installation box



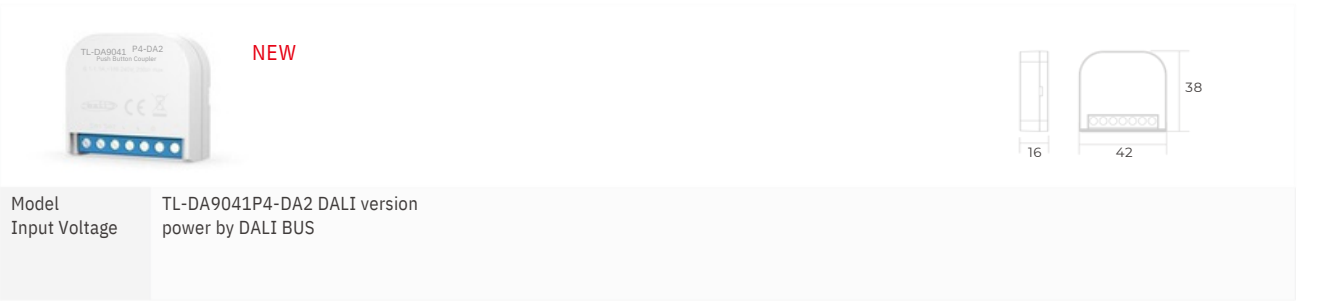
DALI-2 Motion Sensor Coupler

- \*\*DALI-2 Certified Motion Sensor Coupler\*\* - \*\*Inputs:\*\* 4 channels for dry contact input from standard motion sensors
- \*\*Occupancy Sensor Instances:\*\* Supports four instances of occupancy sensors
- \*\*Conversion:\*\* Converts standard motion sensors into DALI-2 sensors
- \*\*Channel Configuration:\*\* Each of the 4 channels is configured separately and operates independently
- \*\*Power Supply:\*\* Powered by the DALI bus with a consumption of less than 10mA
- \*\*Configuration:\*\* Configurable via a DALI-2 compliant central controller
- \*\*Multi-Module Capability:\*\* Multiple couplers can be installed on the same DALI line
- \*\*Functionality:\*\* Fully configurable through the master controller



DALI-2 Push Button Coupler

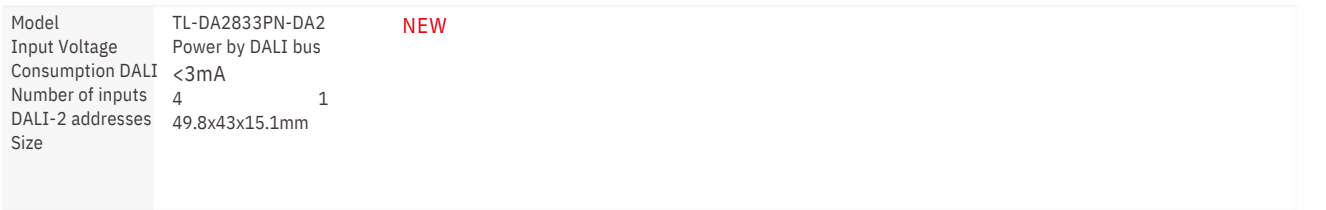
DALI-2 Push Button Coupler



DALI-2 Push Button Coupler with NFC

The DALI-2 push-button coupler is a versatile 4-channel interface designed for simple installation in wall or flush-mounted boxes. It enables the integration of existing switches, regardless of the manufacturer, into the DALI system. Configuration of the push-button functions is streamlined through the TL NFC app, removing the need for setup via a DALI host.



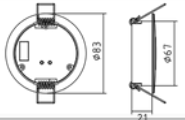
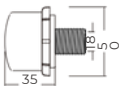
- NFC Programmable: Equipped with a 4-key push-to-DALI control unit, allowing programmable settings via NFC technology.
- Input Options: Supports 4 channels for either push switch input or dry contact motion sensor input.
- Modes: Features PD (Push Dim) mode for push switch input and CD (Corridor Dim) mode for dry contact motion sensors, both configurable through NFC.
- Standalone Functionality: Capable of functioning as standalone DALI sensors when connected to dry contact motion sensors in CD mode.
- Device Configuration: Enables flexible configuration of controlled DALI device types via the NFC app, including DT6, Tc, XY coordinates, and RGBWAF.
- Push Switch Configuration: Each push switch's controlled object can be customized through the NFC app.
- Control Options: Supports broadcast, single address, and group control methods.
- Operations: Each push switch supports short press, long press, and double-click actions for versatile operation.
- Multi-Unit Installation: Allows for the installation of multiple control units on each DALI line, expanding the number of control points available.





DALI-2 & D4i Sensor

- Certification: DALI-2 and D4i certified
  - Detection Technology: Microwave motion detection
  - Motion Sensor Instance: Type 3 (303)
  - Light Sensor Instance: Type 4 (304)
  - Illuminance Measurement: Accurately measures ambient light levels for precise lighting control
  - Control: Supports autonomous sensor-based operation for efficient lighting management
  - Operating Voltage: 12-24V DC
  - Detection Angle: 150° for wall-mounted installations, 360° for ceiling-mounted installations

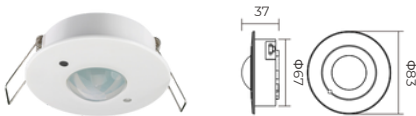
TL-DA9030AIOT-MW Ceiling recessed installation	TL-DA9033AIOT-MW IP65, ZHAGA Interface, Single antenna
	
	



Ceiling Mounted DALI-2 PIR

+ Photocell Sensor

- Sensor Type: DALI-2 PIR and photocell sensor
- Power Supply: Powered by the DALI bus, with a power consumption of less than 10mA
- Installation: Ceiling mount
- Recommended Installation Height: 2.5 meters
- PIR Detection Range: Ø8m at 2.5m height, with a maximum detection range up to [specify based on application needs]
- Lux Detection Range: 0-1000 lux, ideal for daylight harvesting
- Configuration: Adjustable through a DALI-2 compliant central controller
- Multi-Sensor Capability: Allows installation of multiple sensors on the same DALI line for enhanced system scalability and control



Model

Power Supply

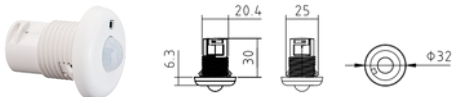
TL-DA9030AIOT-PIR

DALI Bus

Fixture Integrated DALI-2 PIR

+ Photocell Sensor

- Sensor Type: DALI-2 compliant PIR and photocell multi-sensor
- Power Supply: Powered by the DALI bus, with a power consumption of less than 10mA
- Installation: Fixture-integrated design
- Recommended Installation Height: 2.5 meters
- PIR Detection Range: Up to [specify range based on project requirements]
- Lux Detection Range: 0-1000 lux, optimized for daylight harvesting applications
- Configuration: Fully configurable via a DALI-2 compliant central controller
- Multi-Sensor Capability: Supports the installation of multiple sensors on the same DALI line for comprehensive control



Model

Power Supply

TL-DA9032AIOT-PIR

DALI Bus

Fixture Integrated Zhaga 20

DALI-2 PIR + Photocell Sensor

- Sensor Type: DALI-2 compliant PIR and photocell multi-sensor
- Power Supply: Powered directly by the DALI bus, with a power consumption of less than 10mA
- Installation: Designed for integration with fixtures using a Zhaga Book 20 socket
- Recommended Installation Height: Optimal performance at a height of 2.5 meters
- PIR Detection Range: Detects motion within a 5-meter range when installed at a 2.5-meter height
- Lux Detection Range: Supports 0-1000 lux detection for daylight harvesting applications
- Configuration: Fully configurable through a DALI-2 compliant central controller
- Multi-Sensor Capability: Allows the installation of multiple sensors on a single DALI line for enhanced flexibility and control

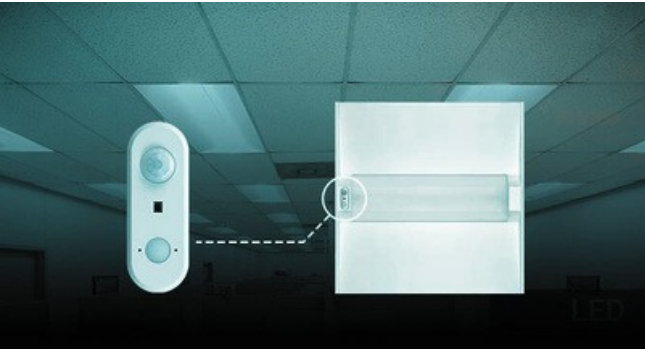


Model

Power Supply

TL-DA9035AIOT-PIR

DALI Bus

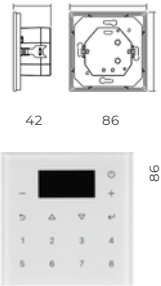




## DALI-2 Master

### Touch Panel DALI-2 Master

- Device: DALI Master Controller with an integrated OLED user interface.
- Output: Single channel DALI output.
- Address Management: Automatically assigns and manages addresses for up to 64 DALI control gears.
- Control Capability: Supports management of up to 64 control gears with individual addresses.
- Supported Device Types: Compatible with 5 DALI control gear types: DT6, DT8 Tc, DT8 XY coordinate, DT8 RGBWA, and DT7 Switching actuator.
- Scenes: Configurable for up to 16 DALI scenes per control gear.
- Groups: Allows each control gear to be assigned to up to 16 DALI groups.
- Timer Tasks: Capable of handling up to 256 timer tasks.
- Fade Cycles: Supports configuration of up to 4 brightness and color fade cycles.
- Bionic Scheduling: Enables configuration of up to 4 bionic color temperature schedules for CCT control gears.
- RTC: Integrated real-time clock (RTC) for advanced scheduling and automation functions.
- Configuration: Simple and efficient setup through PC software with a user-friendly interface.

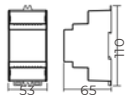


Model	TL-2300T-OLED
Input Voltage	100-240Vac
Power Consumption	<15mA DALI signal
Output	



### USB Interface DALI-2 Master

- Supported Device Types: Compatible with control gear device types DT6, DT8 Tc, DT8 XY, and DT8 RGBWA.
- DALI-2 Input Devices: Fully supports integration with DALI-2 input devices for expanded functionality.
- Control Capacity: Manages addressing, grouping, and scene configuration for up to 64 control gears.
- Power Supply: Integrated 230mA DALI power supply, removing the need for external wiring.
- PC Connectivity: Provides seamless connectivity to a Windows PC via USB port.
- Configuration: Simple and efficient setup using dedicated PC configuration software.
- Battery and RTC: Equipped with a built-in battery and real-time clock (RTC) for advanced timer task configurations.
- Scheduling: Enables cycle schedule and bionic schedule configurations, supporting Human Centric Lighting strategies.

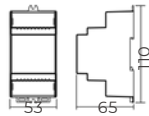


Model	TL-2300-USB
Input Voltage	100-240Vac
Output current	230mA 16Vdc
Output voltage	
Feature	DIN RAIL installation

## Gateway

### DALI IoT Gateway

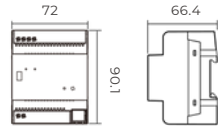
- >
- Supported Device Types: Compatible with DT6, DT8 Tc, DT8 XY, and DT8 RGBWA control gear device types.
  - Control Capacity: Manages addressing, grouping, and scene configuration for up to 64 control gears, supporting both DALI-1 and DALI-2 devices.
  - Power Supply: Integrated 250mA DALI power supply, eliminating the need for external wiring.
  - Network Connectivity: Easily connects to the network via Ethernet for seamless integration.
  - Configuration: Fast and straightforward setup through a dedicated mobile application.
  - Battery and RTC: Equipped with a built-in battery and real-time clock (RTC) for advanced timer task configurations.
  - Scheduling: Supports cycle schedule configuration and includes a Circadian rhythm function for dynamic lighting control.



Model	TL-GW-TDA (Works with tuya platform)	Model	TL-GW-EDA (Ethernet to DALI Gateway, can be integrated into 3rd party platform through MQTT)
Input Voltage	24Vdc	Input Voltage	24Vdc
Output Current	250mA	Output Current	250mA
Output Voltage	12-22.5Vdc	Output Voltage	12-22.5Vdc
Feature	Din Rail Mounted / Remote Control / Auto Configuration / Built-in DALI Master / Wireless DALI / OTAU...	Feature	Din Rail Mounted / Remote Control / Auto Configuration / Built-in DALI Master / Wireless DALI / OTAU...

### KNX to 2 Channel DALI Gateway

- Device: KNX to DALI Gateway.
- Integration: Seamlessly integrates DALI systems into KNX networks for centralized control.
- DALI Outputs: Provides 2 independent DALI output channels.
- Power Supply: Each DALI channel is equipped with a built-in 250mA DALI power supply.
- Monitoring: Features a DALI bus state monitor indicator for real-time system diagnostics.
- Wiring: No external DALI power supply is required, simplifying the overall wiring setup.
- Device Compatibility: Supports all DALI DT6 and DT8 device types.
- PC Connectivity: Equipped with a mini USB port for connection to DALI PC software.
- Programming: Fully configurable via ETS software for streamlined setup and management.

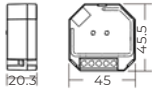



Model	TL-KN9100/DA2-2CH	Input Power	100-240VAC
Input Voltage	21-30V DC, via the KNX/EIB bus	Input Current	2 Channels
Output Voltage	DALI 16VDC	Output Current	2*250mA

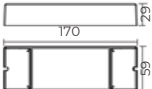

DALI Bus PS



DALI Bus Power Supply

- \*\*Radio Frequency Interference:\*\* Compliant with EN 55015:2013
- \*\*Immunity Standard:\*\* Meets EN 61547:2009
- \*\*Mains Current Harmonics:\*\* Complies with EN 61000-3-2:2014
- \*\*Voltage Fluctuations and Flicker Limits:\*\* Adheres to EN 61000-3-3:2013
- \*\*General and Safety Requirements:\*\* Conforms to EN 61347-1:2015
- \*\*Operating Voltage:\*\* 100-240V AC



Model	Input	TL-2400PSIOT	Model	Input	TL-2400PEAIOT
Voltage	Output	100- 240Vac	Voltage	Output	100-240Vac
Current	Output	100mA	Current	Output	250mA
Voltage		16Vdc	Voltage		16Vdc
Feature		Mini size	Feature		Large output current



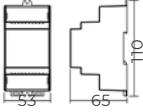



Model	Input	TL-2400PIOT
Voltage	Output	100- 240Vac
current	Output	250mA
voltage		16Vdc
		DIN RAIL
Feature		installation

Repeater

DIN Rail DALI Repeater PS



- \*\*Device:\*\* DALI Repeater with integrated DALI power supply
- \*\*Power Supply:\*\* 24V DC with a maximum DALI power output of 150mA
- \*\*Cable Length Enhancement:\*\* Extends the maximum DALI cable length from 300 meters to 600 meters
- \*\*Signal Functionality:\*\* Enhances and transmits DALI signals bidirectionally
- \*\*Galvanic Separation:\*\* Provides isolation between DALI circuits
- \*\*Installation:\*\* Designed for DIN rail mounting



Model	Power supply	TL-2400AMP-DIN
Output		24Vdc 150mA
Current		16Vdc
Output Voltage		

DALI Repeater PS

- Device: DALI Repeater with an integrated DALI power supply.
- Cable Length Enhancement: Increases the maximum DALI cable length from 300 meters to 600 meters.
- Signal Functionality: Amplifies and transmits DALI signals bidirectionally for improved communication.
- Galvanic Separation: Ensures electrical isolation between DALI circuits for enhanced safety and reliability.
- Network Layout: Supports both radially arranged network layouts and cascaded system mounting with a single master.
- Cascading: Limited cascading (series connection) of multiple repeaters in multi-master mode.
- Device Limitation: Supports up to 64 DALI devices across the network, with flexible allocation across subordinate circuits.
- Power Supply: Eliminates the need for an additional DALI power supply for subordinate DALI circuits.



Model	Input	TL-2400AMP
Voltage	Output	100-240Vac
Current		150mA 16Vdc
Output Voltage		

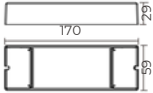



Broadcast Module

DALI Broadcast Module

- \*\*Device:\*\* DALI Broadcast Module
- \*\*Functionality:\*\* Expands DALI circuits by receiving commands from the DALI main circuit as a control gear with a single address
- \*\*Command Forwarding:\*\* Forwards received DALI commands to all control gears connected to its DALI OUT
- \*\*Control:\*\* All control gears connected to DALI OUT are controlled by the forwarded broadcast DALI commands and the DALI address of the module
- \*\*Addressing:\*\* No DALI addressing required for control gears connected to DALI OUT
- \*\*Expansion:\*\* Multiple modules can be connected to the DALI main circuit to establish multiple DALI sub-circuits, significantly increasing the number of DALI control gears
- \*\*Error Detection:\*\* Includes error detection and monitoring functions
- \*\*Isolation:\*\* Mains power supply, DALI input (DALI IN), and DALI output (DALI OUT) are fully isolated from each other

NEW



Model	Input	TL-2400BRCIOT
Voltage	Output	100-240Vac
Current	Output	150mA
Voltage		16Vdc
Feature		DT6, DT8 Tc, DT8 XY, DT8 RGBW, 4 in 1

Wireless to DALI Converter

Wireless to DALI+0/1-10V 2 in 1 Converter

- \*\*Device:\*\* Wireless to DALI + 0/1-10V Converter
- \*\*Output Selection:\*\* Selectable output for either DALI signal or 1-10V signal
- \*\*Relay Output:\*\* Features a maximum 5A relay output and metering function
- \*\*Power Supply:\*\* Includes a built-in DALI bus power supply, eliminating the need for an external DALI bus power supply
- \*\*Device Types:\*\* Selectable DALI DT6 or DT8 device types under DALI mode
- \*\*Color Control:\*\* Supports color control according to DALI specifications for Device Type 8
- \*\*Color Types:\*\* Includes Tc (Tunable White), XY coordinates, and RGBW
- \*\*Control Modes:\*\* Selectable DALI address control mode or group control mode
- \*\*Address Control:\*\* Selectable DALI address (00-63)
- \*\*Group Control:\*\* Selectable DALI group (0-15)
- \*\*Control Options:\*\*
  - Control one DALI group of devices or one DALI address
  - Control all devices on the DALI line via broadcast

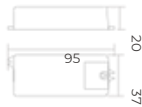



Feature Model	TL-2421IOT-ZG	TL-2421IOT-SB	TL-2421IOT-ZV
Input Voltage	110-240Vac	110-240Vac	110-240Vac
Output DALI PS current	50mA	50mA	50mA
Output 0/1-10V Current	20mA	20mA	20mA
Relay Voltage	110-240Vac	110-240Vac Incandescent:	110-240Vac Incandescent:
Relay Current	Incandescent: LED: 1.6A Zigbee to DALI	LED: 1.6A Bluetooth to DALI	LED: 1.6A Z- Wave to DALI
Feature			
Feature Model	TL-2421IOT-ZG-TY	TL-2421IOT-BL-TY	TL-WF2411IOT-TY
Input Voltage	110-240Vac	110-240Vac	
Output DALI PS current	50mA	50mA	DALI Bus Powered
Output 0/1-10V Current	20mA	20mA	
Relay Voltage	110-240Vac	110-240Vac	
Relay Current	Incandescent: 5A/ LED: 1.6A TUYA Zigbee to DALI	Incandescent: 5A/ LED: 1.6A TUYA Bluetooth to DALI	
Feature			TUYA Wi-Fi to DALI

Wireless to DALI Converter

Wireless+Push to DALI+0/1-10V Converter

- \*\*Device:\*\* Wireless + Push to DALI + 0/1-10V Converter
- \*\*Control Methods:\*\* Can be controlled by both wireless signals and push switch inputs
- \*\*Integration:\*\* Integrates existing push switches into DALI or 0/1-10V systems
- \*\*Output Selection:\*\* Selectable output for either DALI signal or 1-10V signal via DIP switch
- \*\*Power Supply:\*\* Includes a built-in 50mA DALI bus power supply, eliminating the need for an external DALI power supply
- \*\*Device Types:\*\* Selectable DALI DT6 or DT8 device types
- \*\*Color Control:\*\* Supports color control according to DALI specifications for Device Type 8
  - \*\*Color Types:\*\* Selectable color types include Tc (Tunable White), XY coordinates, and RGBW
  - \*\*Control Modes:\*\* Choose between DALI address control mode or group control mode
  - \*\*Address Control:\*\* Selectable DALI address range from 00 to 63
  - \*\*Group Control:\*\* Selectable DALI group range from 0 to 15
  - \*\*Control Options:\*\*
    - Control a single DALI group of devices or one specific DALI address
    - Control all devices on the DALI line via broadcast

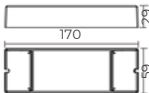



Model	TL-2421IOTIOT-ZG-SB-Push	TL-2421IOTIOT-SB-Push
Input Voltage	110-240Vac	110-240Vac
Output DALI PS current	50mA 20mA	50mA
Output 0/1-10V Current		20mA
Feature	Zigbee+Push to DALI	Bluetooth+Push to DALI

DALI to 0/1-10V Converter

DALI to 0/1-10V/PWM Dimmer

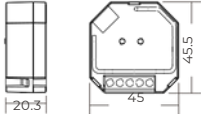

- \*\*Device:\*\* DALI to 0/1-10V Signal Converter
- \*\*Input:\*\* DALI signal input
- \*\*Output:\*\* 2 channels of 0-10V signal output
- \*\*Control:\*\* 1 DALI address controls both 0-10V channels synchronously



Model	TL-2303IOT(0-10V/PWM)
Input Voltage	100-240Vac 60mA
Input Current	2x(0-5V), 2x(0-10V), 2x(0-15V)
Output	

Wireless to DALI Converter

- \*\*Functionality:\*\* Receives wireless signals and outputs DALI signals to the DALI line
- \*\*Compliance:\*\* Adheres to DALI standard protocols IEC 62386-102, IEC 62386-207, and IEC 62386-209
- \*\*Control Modes:\*\* Supports multiple selectable control modes



Model	TL-2411IOT-SB	TL-2411IOT-ZG	TL-2411IOT-ZV	TL-2411IOTIOT-RF-DIM	TL-2411IOTIOT-RF-CCT	TL-2411IOT-RF-RGBW
Input Voltage	12- 24Vdc	12- 24Vdc	12- 24Vdc	Power by DALI bus	Power by DALI bus	Power by DALI bus
Current Consumption	<4mA	<4mA	<4mA	<4mA	<4mA	<4mA
Feature	Bluetooth DALI, 4 modes in 1, DALI address select	Zigbee to DALI, 4 modes in 1, DALI address select	Z-Wave to DALI, 4 modes in 1, DALI address select	RF to DALI, DT6, DALI address select	RF to DALI, DT8 Tc, DALI address select	RF to DALI, DT8 RGBW, DALI address select

2024 DALI Lighting Control System

